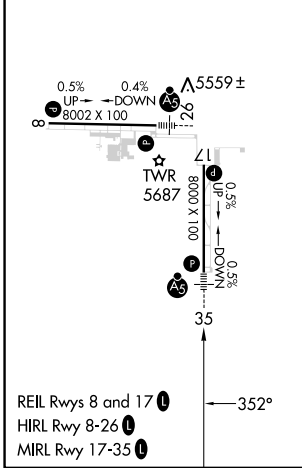
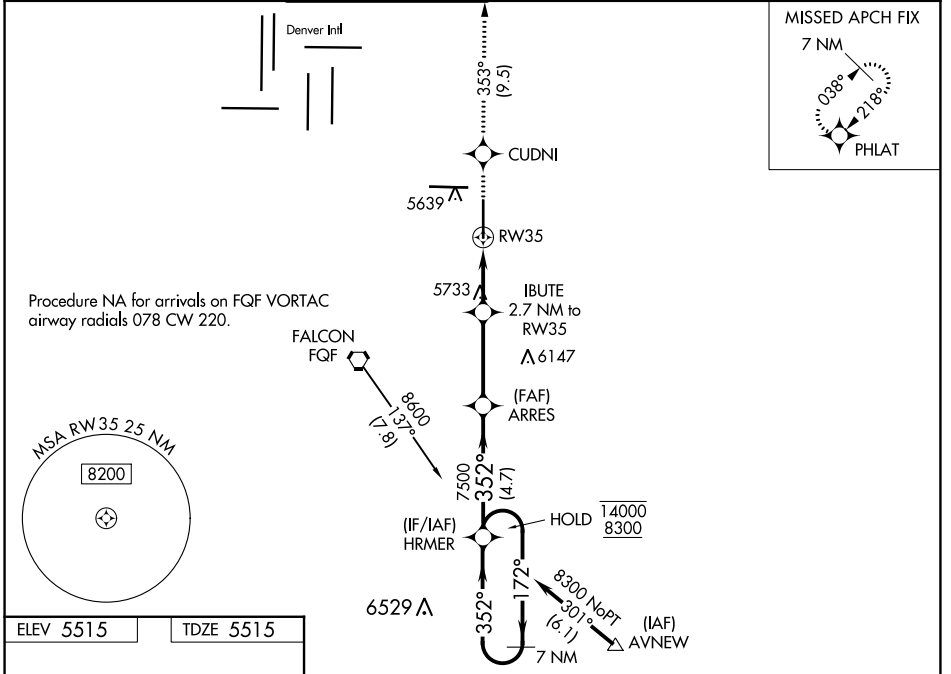


WAAS CH 93809 W35A	APP CRS 352°	Rwy Idg TDZE Apt Elev	8000 5515 5515
--	------------------------	-----------------------------	---

RNAV (GPS) RWY 35

COLORADO AIR AND SPACE PORT (CFO)

RNP APCH. ⚠ For uncompensated Baro-VNAV systems, LNAV/VNAV NA below -25°C or above 46°C. For inop ALS, increase LNAV/VNAV all Cats visibility to ¾ SM.		MALSR 	MISSED APPROACH: Climb to 8000 direct CUDNI and on track 353° to PHLAT and hold.			
ATIS 119.025	DENVER APP CON 128.25 371.95	SPACE PORT TOWER* 120.2 (CTAF)	GND CON 124.7	CLNC DEL 124.7	CLNC DEL 121.75 (When twr closed)	UNICOM 122.95



8000	CUDNI	tr 353°	PHLAT	HRMER	7 NM Holding Pattern
*LNAV only					
IBUTE 2.7 NM to RW35		7500		172° → 14000	
1.5 NM to RW35		6420		← 352°	
1.5 NM		1.2 NM		3.4 NM	
1.2 NM		3.4 NM		4.7 NM	
CATEGORY	A	B	C	D	
LPV DA	5715-½		200 (200-½)		
LNAV/VNAV DA	5783-½		268 (300-½)		
LNAV MDA	6040-½ 525 (600-½)		6040-1 525 (600-1)		
CIRCLING	6040-1 525 (600-1)		6100-1½ 585 (600-1½)		6300-2½ 785 (800-2½)