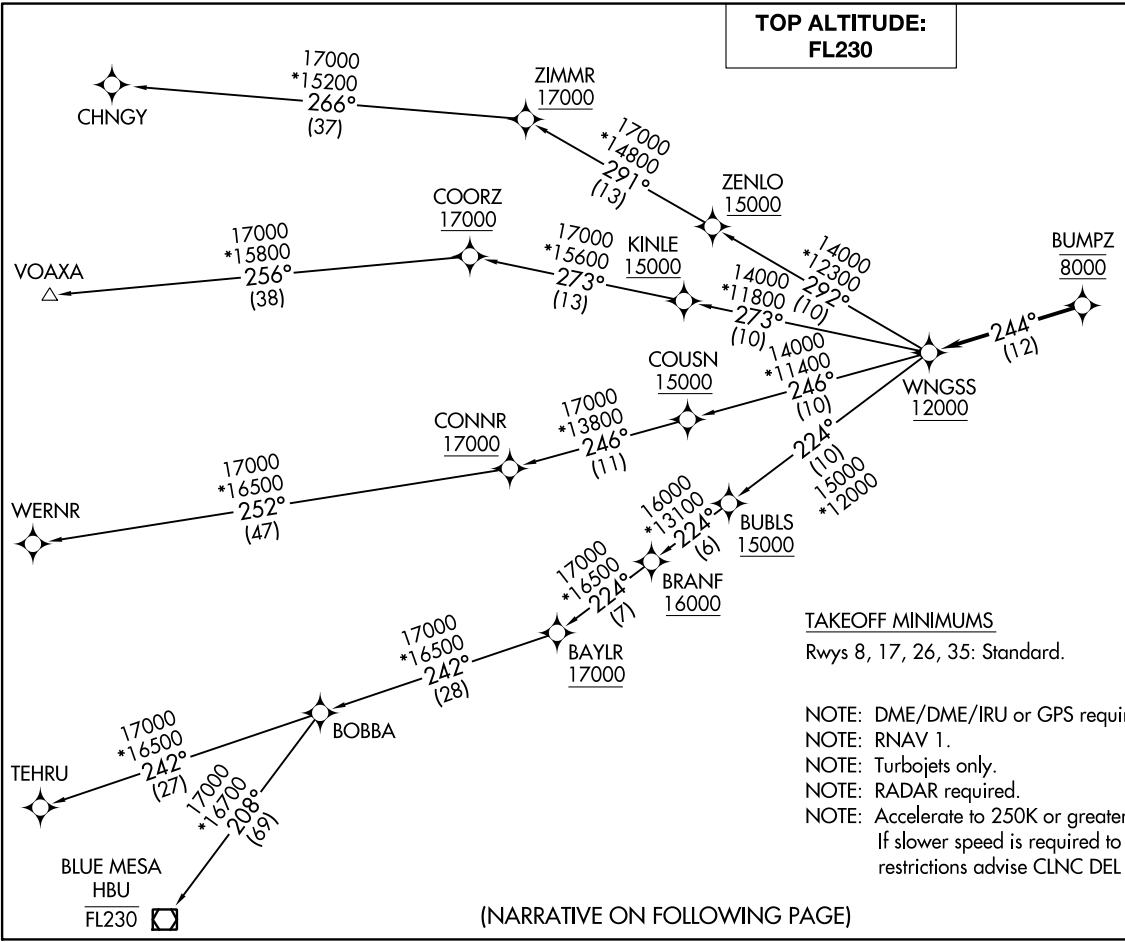


**TOP ALTITUDE:  
FL230**

ATIS  
119.025  
CLNC DEL  
124.7  
CLNC DEL  
121.75 (when twr closed)  
DENVER DEP CON  
128.25 371.95

(WNGSS1 .WNGSS) 20086  
WNGSS ONE DEPARTURE (RNAV)

COLORADO AIR AND SPACE PORT (CFO)  
DENVER, COLORADO  
AL-6831 (FAA)



TAKEOFF MINIMUMS  
Rwys 8, 17, 26, 35: Standard.

- NOTE: DME/DME/IRU or GPS required.
- NOTE: RNAV 1.
- NOTE: Turbojets only.
- NOTE: RADAR required.
- NOTE: Accelerate to 250K or greater upon reaching 10000. If slower speed is required to meet crossing restrictions advise CLNC DEL prior to taxi.

NOTE: Chart not to scale.

(NARRATIVE ON FOLLOWING PAGE)

WNGSS ONE DEPARTURE (RNAV)  
(WNGSS1 .WNGSS) 26MAR20

DENVER, COLORADO  
COLORADO AIR AND SPACE PORT (CFO)



DEPARTURE ROUTE DESCRIPTION

TAKEOFF RUNWAY 8: Climb on a heading between 312° CW 228° as assigned by ATC. Thence. . . .

TAKEOFF RUNWAY 17: Climb on a heading between 352° CW 229° as assigned by ATC. Thence. . . .

TAKEOFF RUNWAY 26: Climb on a heading between 315° CW 083° as assigned by ATC. Thence. . . .

TAKEOFF RUNWAY 35: Climb on a heading between 313° CW 172° as assigned by ATC. Thence. . . .

. . . . expect RADAR vectors to cross BUMPZ at 8000 then on track 244° to cross WNGSS at or above 12000 then on (transition) maintain FL230 or filed lower altitude. Expect higher filed altitude ten minutes after departure.

BLUE MESA TRANSITION (WNGSS1.HBU)

CHNGY TRANSITION (WNGSS1.CHNGY)

TEHRU TRANSITION (WNGSS1.TEHRU)

VOAXA TRANSITION (WNGSS1.VOAXA)

WERNR TRANSITION (WNGSS1.WERNR)

SW-1, 26 DEC 2024 to 23 JAN 2025

SW-1, 26 DEC 2024 to 23 JAN 2025