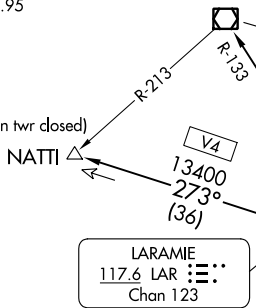


YELLOWSTONE FOUR DEPARTURE
(YELLOW4.DEN) 16JUN20

(YELLOW4.DEN) 23334
YELLOWSTONE FOUR DEPARTURE

DENVER DEP CON
128.25 371.95
ATIS
119.025
CLNC DEL
124.7
CLNC DEL
121.75 (when twr closed)



MEDICINE BOW
116.85 MBW
Chan 115(Y)

RAPID CITY
112.3 RAP
Chan 70

SCOTTSBLUFF
112.6 BFF
Chan 73

CHEYENNE
113.1 CYS
Chan 78

LARAMIE
117.6 LAR
Chan 123

YAMMI
12000 (For MEDICINE BOW transition only)

CHEYENNE
113.1 CYS
Chan 78

**TOP ALTITUDE:
ASSIGNED BY ATC**

YALES
10000
349° (59)

COPLA
9000
110° (70)

YOKES
9000
150° (50)

GILL
114.2 GLL
Chan 89

DENVER
117.9 DEN
Chan 126

MOCA for HANKI transition only.

TAKEOFF MINIMUMS
All runways: Standard.

NOTE: RADAR required.

(CONTINUED ON FOLLOWING PAGE)



NOTE: Chart not to scale.

DENVER, COLORADO
COLORADO AIR AND SPACE PORT (CFO)

AL-6851 (FAA)
DENVER, COLORADO
COLORADO AIR AND SPACE PORT (CFO)



DEPARTURE ROUTE DESCRIPTION

TAKEOFF ALL RUNWAYS: Fly assigned heading and altitude for RADAR vectors to assigned transition. Expect filed altitude 10 minutes after departure.

LOST COMMUNICATIONS: If no transmissions are received within one minute after departure, maintain assigned heading until 7000 feet, then climb to filed altitude direct DEN VOR/DME, then on assigned transition. If filed altitude is above 10000 feet, cross DEN VOR/DME at or above 11000 feet.

CHEYENNE TRANSITION (YELLOW4.CYS): From over DEN VOR/DME on DEN R-349 and CYS R-163 to CYS VORTAC.

HANKI TRANSITION (YELLOW4.HANKI): From over DEN VOR/DME on DEN R-015 and GLL R-034 to HANKI.

LARAMIE TRANSITION (YELLOW4.LAR): From over DEN VOR/DME on DEN R-334 and LAR R-125 to LAR VOR/DME.

MEDICINE BOW TRANSITION (YELLOW4.MBW): From over DEN VOR/DME on DEN R-334 and MBW R-133 to MBW VOR/DME.

NATTI TRANSITION (YELLOW4.NATTI): From over DEN VOR/DME on DEN R-334 and LAR R-125 to LAR VOR/DME, then on LAR R-273 to NATTI.

RAPID CITY TRANSITION (YELLOW4.RAP): From over DEN VOR/DME on DEN R-359 and GLL R-174 to GLL VOR/DME, then on GLL R-005 and RAP R-186 to RAP VORTAC.

SCOTTSBLUFF TRANSITION (YELLOW4.BFF): From over DEN VOR/DME on DEN R-015 and BFF R-191 to BFF VORTAC.

SW-1, 26 DEC 2024 to 23 JAN 2025

SW-1, 26 DEC 2024 to 23 JAN 2025