

# RNAV (GPS) RWY 17

BOURLAND FLD (50F)

APP CRS	Rwy Idg	<b>3657</b>
<b>165°</b>	TDZE	<b>870</b>
	Apt Elev	<b>873</b>

RNP APCH - GPS.

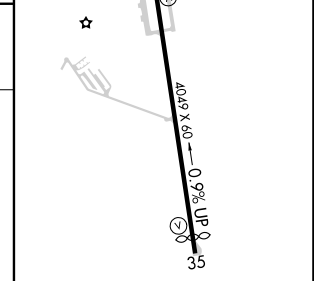
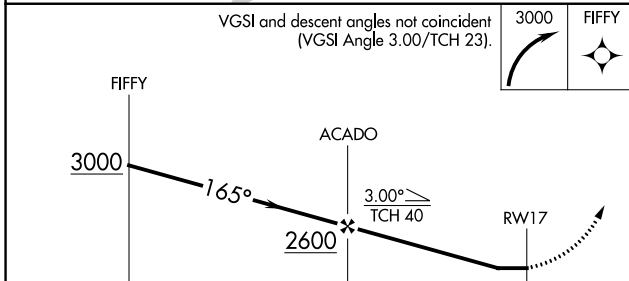
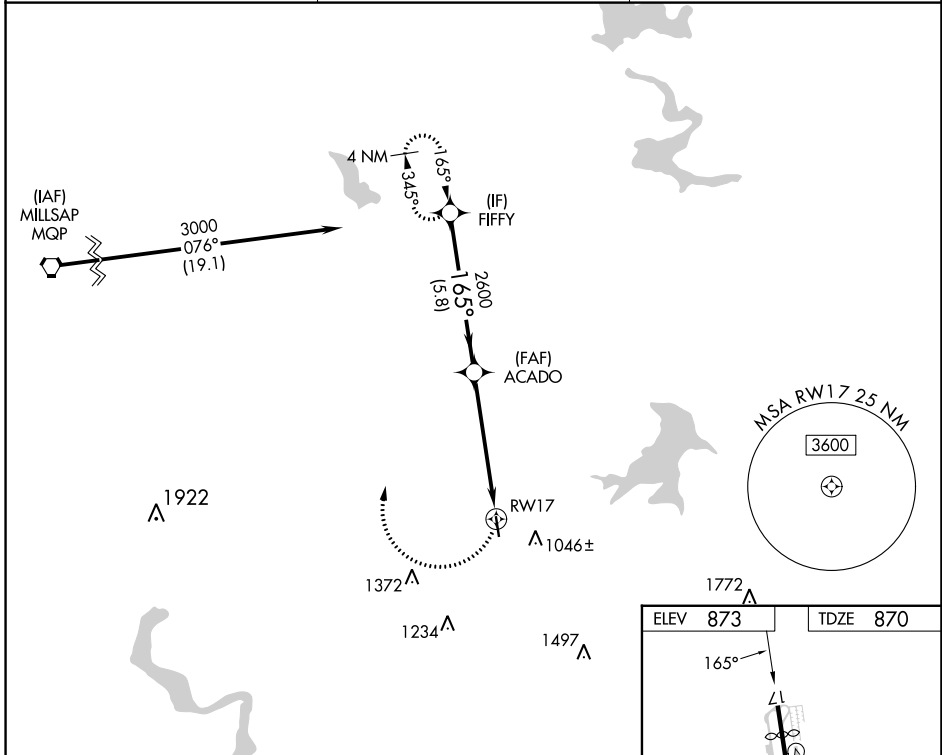
**∇**  
**▲** NA Procedure NA at night. Rwy 17 helicopter visibility reduction below 1 SM NA.

MISSED APPROACH: Climbing right turn to 3000 direct FIFFY and hold.

CPT AWOS-3  
**119,525**

LONE STAR APP CON  
**135,975 379,9**

UNICOM  
**123.0 (CTAF) 0**



CATEGORY	A	B	C	D
LNAV MDA	1520-1	650 (700-1)	1520-1 <sup>7</sup> / <sub>8</sub> 650 (700-1 <sup>7</sup> / <sub>8</sub> )	NA

MIRL Rwy 17-35 **0**

SC-2, 26 DEC 2024 to 23 JAN 2025

SC-2, 26 DEC 2024 to 23 JAN 2025