

FORT WORTH, TEXAS

AL-6854 (FAA)

24305

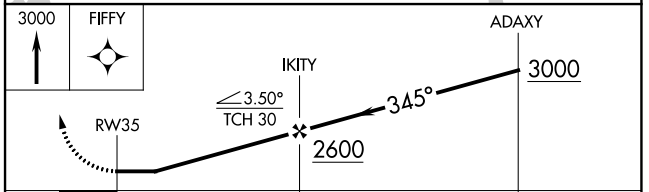
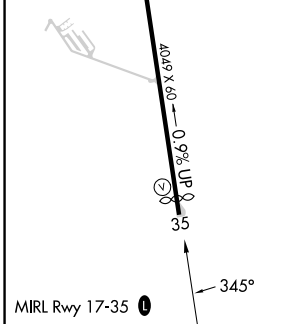
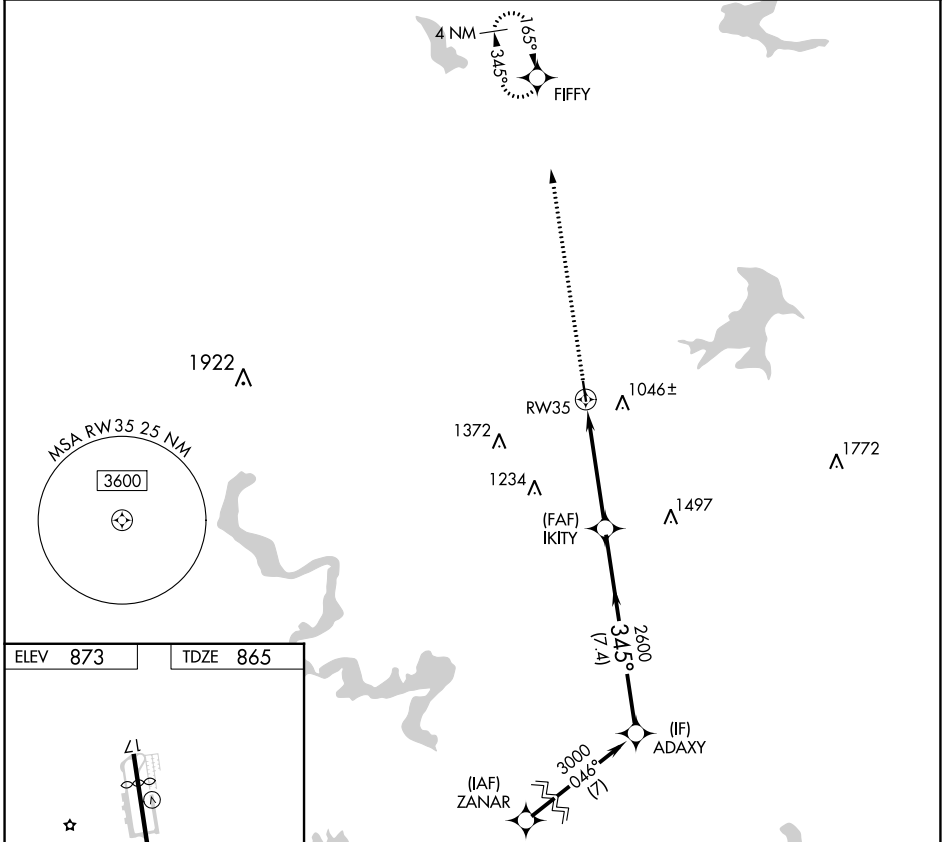
APP CRS	Rwy Idg	3834
345°	TDZE	865
	Apt Elev	873

RNAV (GPS) RWY 35

BOURLAND FLD (50F)

RNP APCH - GPS.	MISSED APPROACH: Climb to 3000 direct FIFFY and hold.
<p>▼ Procedure NA at night. Rwy 35 helicopter visibility reduction below 1 SM NA. Circling NA to Rwy 17.</p> <p>▲ NA</p>	

CPT AWOS-3 119.525	LONE STAR APP CON 135.975 379.9	UNICOM 123.0 (CTAF)
------------------------------	---	-------------------------------



CATEGORY	A	B	C	D
LNAV MDA	1560-1	695 (700-1)	1560-2 695 (700-2)	NA
CIRCLING	1580-1	707 (800-1)	1680-2¼ 807 (900-2¼)	NA

FORT WORTH, TEXAS
Amdt 3 31OCT24

32°35'N-97°35'W

RNAV (GPS) RWY 35

BOURLAND FLD (50F)

SC-2, 26 DEC 2024 to 23 JAN 2025

SC-2, 26 DEC 2024 to 23 JAN 2025