

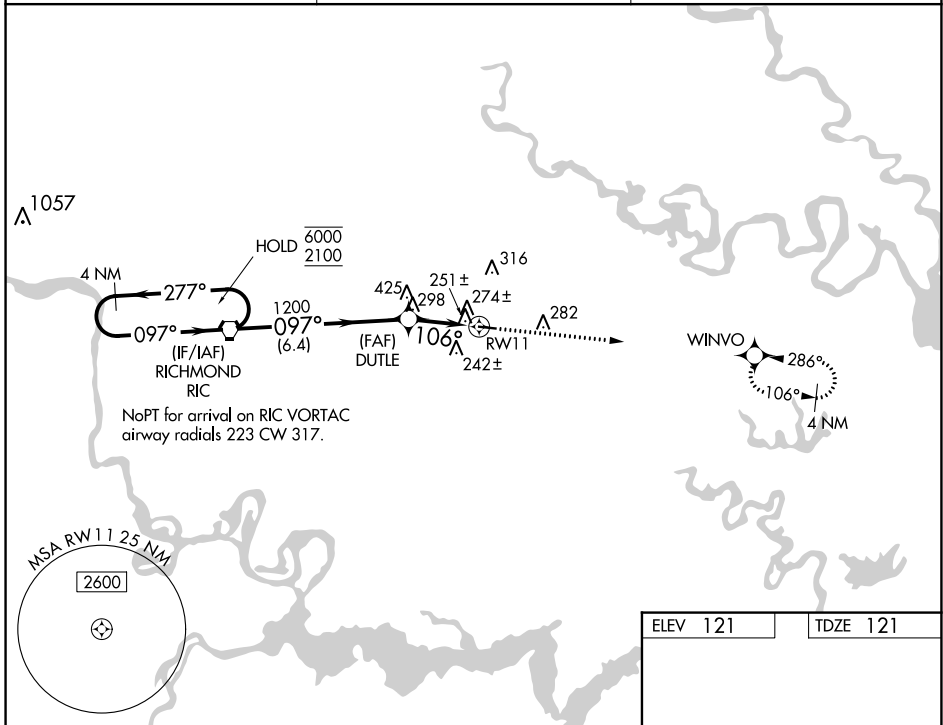
WAAS CH 45932	APP CRS 106°	Rwy Idg TDZE 121	3602
W11A		Apt Elev 121	

RNAV (GPS) RWY 11

NEW KENT COUNTY (W96)

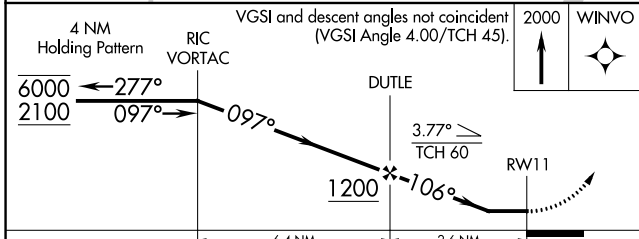
RNP APCH - GPS.	MISSED APPROACH: Climb to 2000 direct WINVO and hold.
<p>Procedure NA at night. Rwy 11 helicopter visibility reduction below 1 SM NA.</p> <p>When local altimeter setting not received, use RIC altimeter setting: increase all MDAs 40 feet and LNAV visibility Cat C ½ SM; increase LP and Circling visibility Cat C ¼ SM.</p>	

AWOS-3 119.875	POTOMAC APP CON 126.4 282.375	UNICOM 122.8 (CTAF) 0
--------------------------	---	---------------------------------

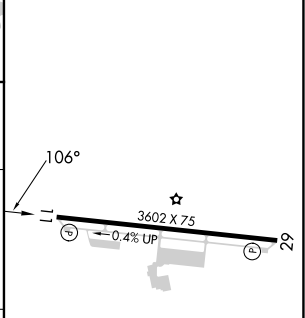


NE-3, 26 DEC 2024 to 23 JAN 2025

NE-3, 26 DEC 2024 to 23 JAN 2025



ELEV 121	TDZE 121
----------	----------



CATEGORY	A	B	C	D
LP MDA	540-1	419 (500-1)	540-1 1/8 419 (500-1 1/8)	NA
LNAV MDA	560-1	439 (500-1)	560-1 1/4 439 (500-1 1/4)	NA
CIRCLING	620-1	499 (500-1)	760-1 3/4 639 (700-1 3/4)	NA

MIRL Rwy 11-29 0

REIL Rwy 11 and 29 0