

APP CRS	Rwy Idg	2609
183°	TDZE	777
	Apt Elev	779

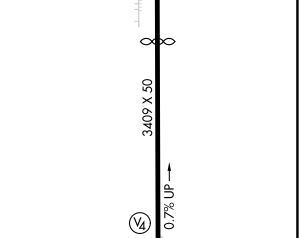
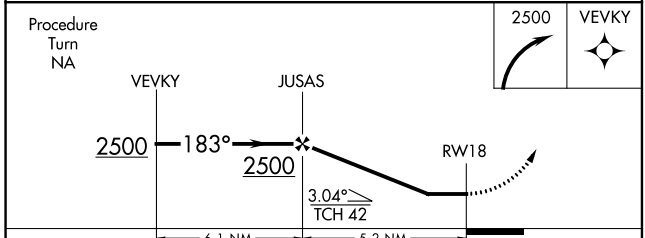
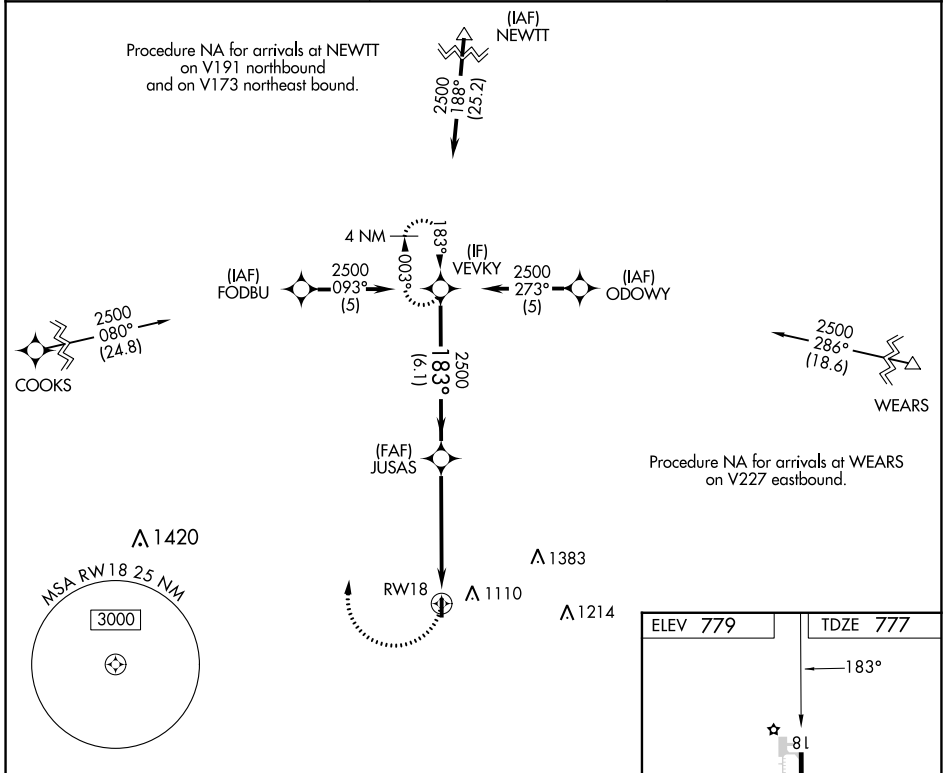
RNAV (GPS) RWY 18

PAXTON (1C1)

NA DME/DME RNP-0.3 NA. Helicopter visibility reduction below 1 SM NA. Use Champaign-Urbana altimeter setting; when not received, use Decatur altimeter setting and increase all MDA 80 feet; increase LNAV Cat C and Circling all Cats visibility ¼ SM. Procedure NA at night.

MISSED APPROACH: Climbing right turn to 2500 direct VEVKY and hold.

CMI ASOS 124.85	CHAMPAIGN APP CON ★ 121.35 285.65	UNICOM 122.8 (CTAF)
---------------------------	---	-------------------------------



CATEGORY	A	B	C	D
LNAV MDA	1400-1	623 (700-1)	1400-1¾ 623 (700-1¾)	NA
CIRCLING	1540-1 761 (800-1)	1540-1¼ 761 (800-1¼)	1620-2½ 841 (900-2½)	NA

LIRL Rwys 18-36
REIL Rwy 18

EC-3, 26 DEC 2024 to 23 JAN 2025

EC-3, 26 DEC 2024 to 23 JAN 2025