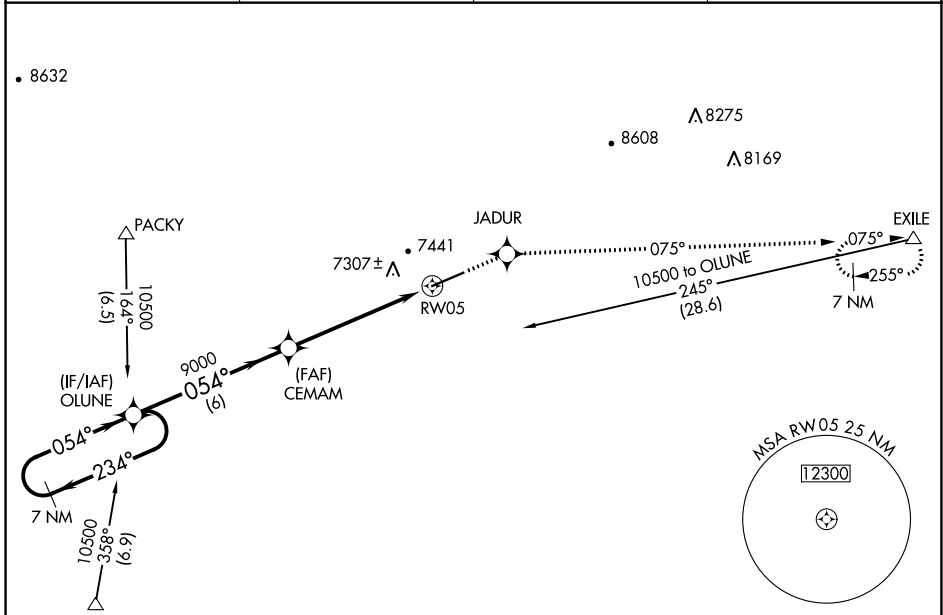


WAAS CH 78302 W05A	APP CRS 054°	Rwy Idg TDZE Apt Elev	7300 7141 7143
--	------------------------	-----------------------------	---

RNAV (GPS) RWY 5

EVANSTON-UINTA COUNTY BURNS FLD (E V W)

RNP APCH. ▼ If local altimeter setting not received, procedure NA. For uncompensated Baro-VNAV systems, LNAV/VNAV NA below -29°C (-20°F) or above 34°C (94°F).		MISSED APPROACH: Climb to 12000 direct JADUR and via 075° track to EXILE and hold, continue climb-in-hold to 12000.	
ASOS 120.0	SALT LAKE CENTER 127.7 354.125	GCO 121.72	UNICOM 123.0 (CTAF) 0



NW-1, 26 DEC 2024 to 23 JAN 2025

NW-1, 26 DEC 2024 to 23 JAN 2025

ELEV 7143		TDZE 7141	
VGSI and RNAV glidepath not coincident (VGSI Angle 3.00/TCH 45). 7 NM Holding Pattern			
OLUNE GP 3.00° TCH 55		CEMAM RW05 *0.8 NM to RW05	
10500 ← 234° → 054° → 9000		*RNAV only 075° tr EXILE	
← 6 NM →		← 4.8 NM →	
CATEGORY	A	B	C
LPV DA		7391-3/4	250 (300-3/4)
LNAV/VNAV DA		7643-13/4	502 (500-13/4)
LNAV MDA		7440-1	299 (300-1)

