

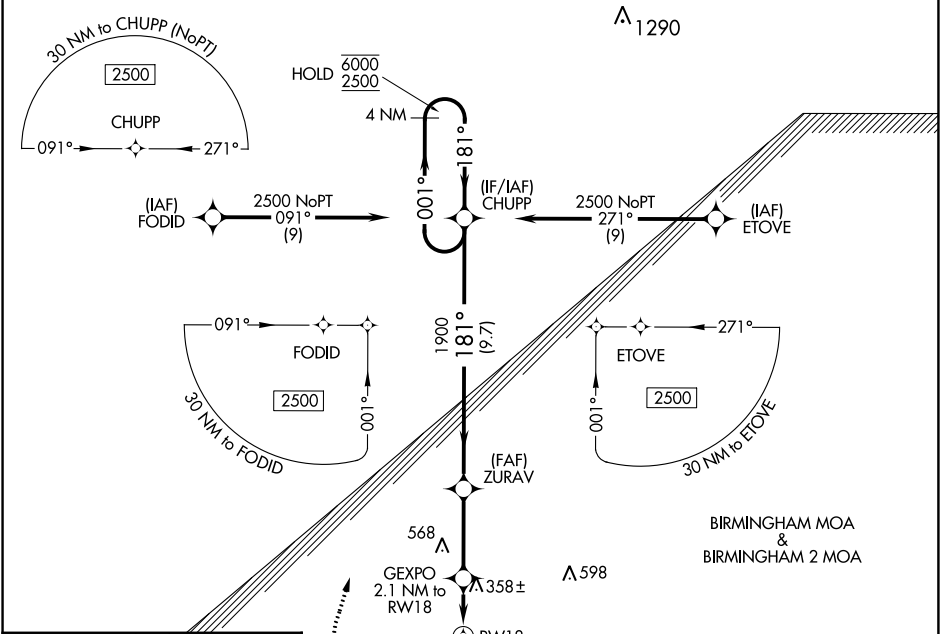
APP CRS	Rwy Idg	3506
181°	TDZE	175
	Apt Elev	175

RNAV (GPS) RWY 18

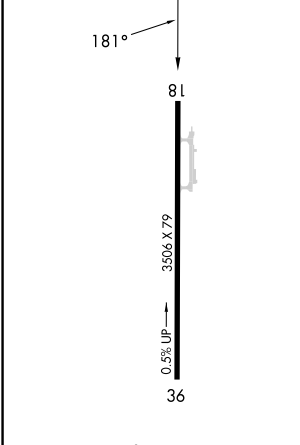
GREENSBORO MUNI (7A)

RNP APCH - GPS.	MISSED APPROACH: Climbing right turn to 2500 direct CHUPP and hold.
Procedure NA at night. Rwy 18 helicopter visibility reduction below 1 SM NA. Use Demopolis altimeter setting.	

DYA AWOS-3P 119.475	ATLANTA CENTER 132.25 263.025	UNICOM 123.0 (CTAF)
-------------------------------	---	-------------------------------



ELEV 175	TDZE 175
----------	----------



2500 CHUPP	4 NM Holding Pattern			
GEXPO 2.1 NM to RWY 18	ZURAV	CHUPP	001° → 6000	← 181° 2500
1900	880	1900		
2.1 NM	3.2 NM	9.7 NM		

CATEGORY	A	B	C	D
LNAV MDA	680-1	505 (600-1)	680-1 ³ / ₈	505 (600-1 ³ / ₈)
CIRCLING	700-1 525 (600-1)	720-1 545 (600-1)	860-2 685 (700-2)	940-2 ¹ / ₂ 765 (800-2 ¹ / ₂)

MIRL Rwy 18-36
REIL Rws 18 and 36

SE-4, 26 DEC 2024 to 23 JAN 2025

SE-4, 26 DEC 2024 to 23 JAN 2025