

APP CRS	Rwy Idg	4220
185°	TDZE	339
	Apt Elev	345

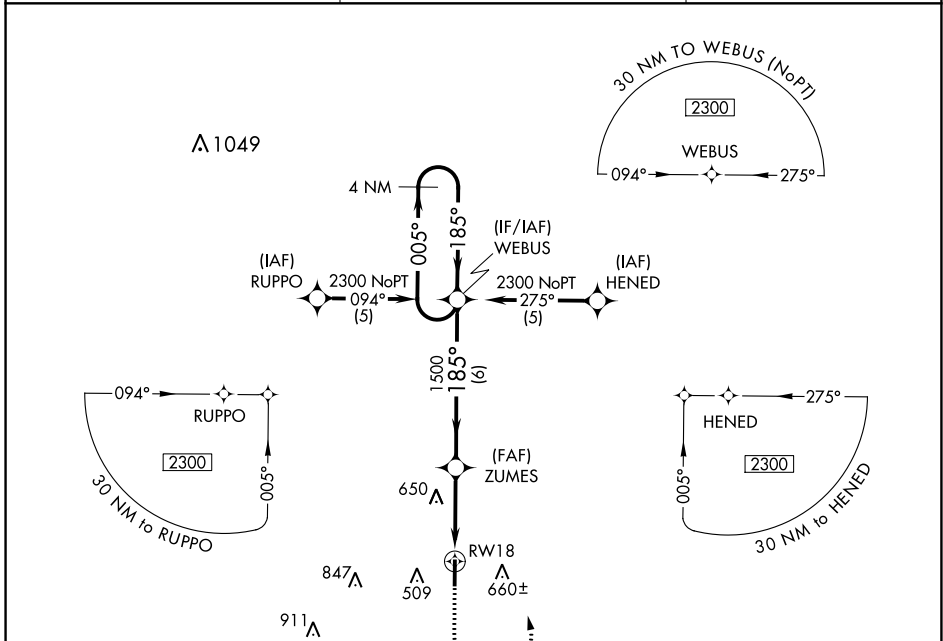
RNAV (GPS) RWY 18

DR C P SAVAGE SR (53A)

NA DME/DME RNP-0.3 NA. Procedure NA at night. Helicopter visibility reduction below 1 SM NA. Use Americus altimeter setting, when not received use Macon altimeter setting and increase all MDA 20 feet.

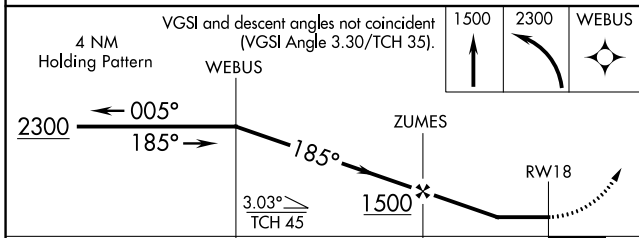
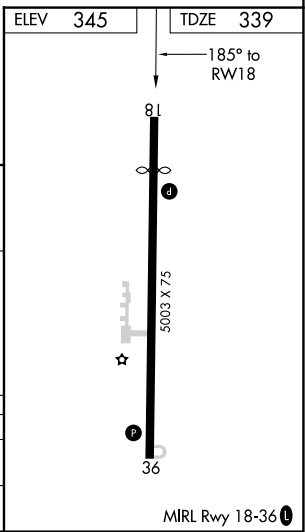
MISSED APPROACH: Climb to 1500 then climbing left turn to 2300 direct WEBUS and hold.

ACJ AWOS-3 128.375	ATLANTA APP CON * 124.2 279.6	CTAF 122.9
------------------------------	---	----------------------



SE-4, 26 DEC 2024 to 23 JAN 2025

SE-4, 26 DEC 2024 to 23 JAN 2025



CATEGORY	A	B	C	D
LNVA MDA	1020-1	681 (700-1)	1020-2 681 (700-2)	NA
CIRCLING	1020-1	675 (700-1)	1120-2¼ 775 (800-2¼)	NA