

WAAS CH <b>99444</b> <b>W32A</b>	APP CRS <b>336°</b>	Rwy Idg <b>4299</b> TDZE <b>1821</b> Apt Elev <b>1821</b>
--	------------------------	---

# RNAV (GPS) RWY 32

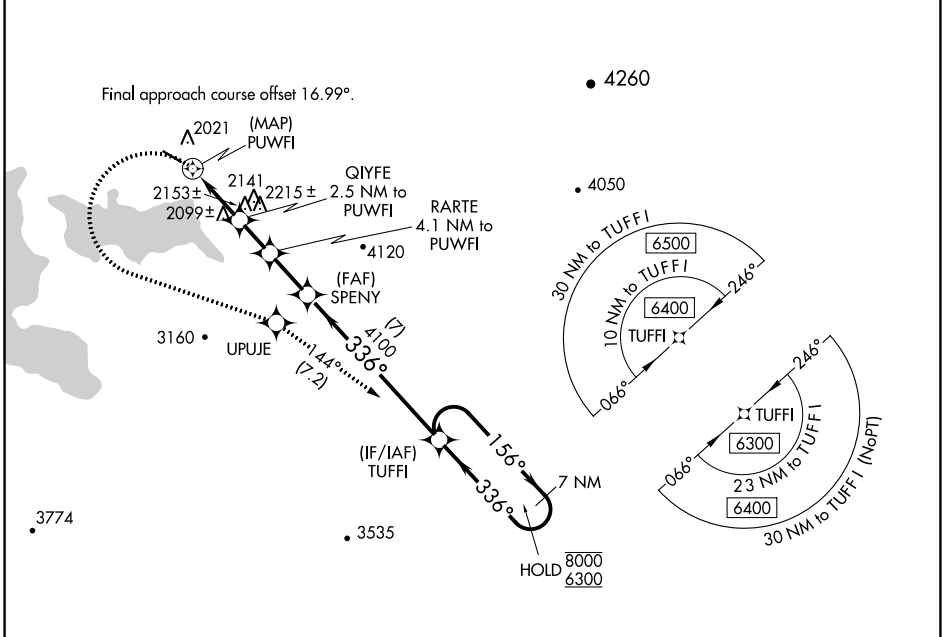
STEPHEN A BEAN MUNI (8B~~0~~)

RNP APCH - GPS.

**⚠** Circling NA for Cat C northeast of Rwy 14-32. Procedure NA at night. Rwy 32 helicopter visibility reduction below 1 SM NA.  
**⚠** -30°C

**MISSED APPROACH:** Climbing left turn to 6300 direct UPUJE and track 144° to TUFFI and hold, continue climb-in-hold to 6300.

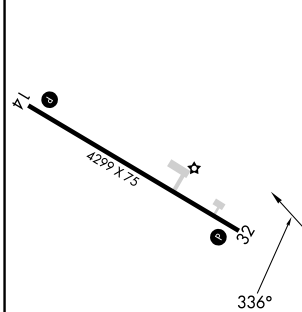
AWOS-3PT <b>118.0</b>	BOSTON CENTER <b>124.25 290.5</b>	UNICOM <b>122.8 (CTAF) 0</b>
--------------------------	--------------------------------------	---------------------------------



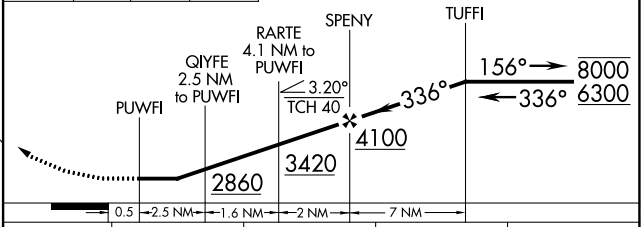
NE-1, 26 DEC 2024 to 23 JAN 2025

NE-1, 26 DEC 2024 to 23 JAN 2025

ELEV 1821	TDZE 1821
-----------	-----------



6300	UPUJE	tr 144°	TUFFI	VGSI and descent angles not coincident (VGSI Angle 3.00/TCH 40).	7 NM Holding Pattern
------	-------	---------	-------	--	----------------------



CATEGORY	A	B	C	D
LP MDA	2560-1	739 (800-1)	2560-2 739 (800-2)	NA
LNAV MDA	2640-1 819 (900-1)	2640-1½ 819 (900-1½)	2640-2½ 819 (900-2½)	NA
<b>C</b> CIRCLING	2640-1½	819 (900-1½)	2640-2½ 819 (900-2½)	NA