

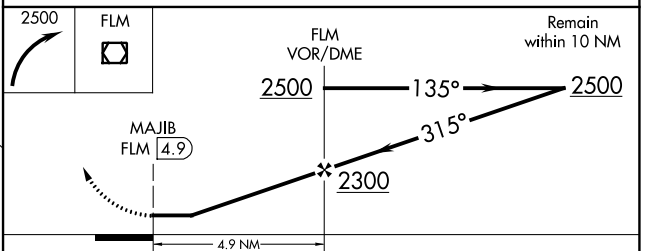
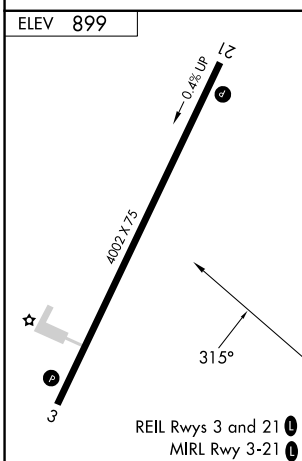
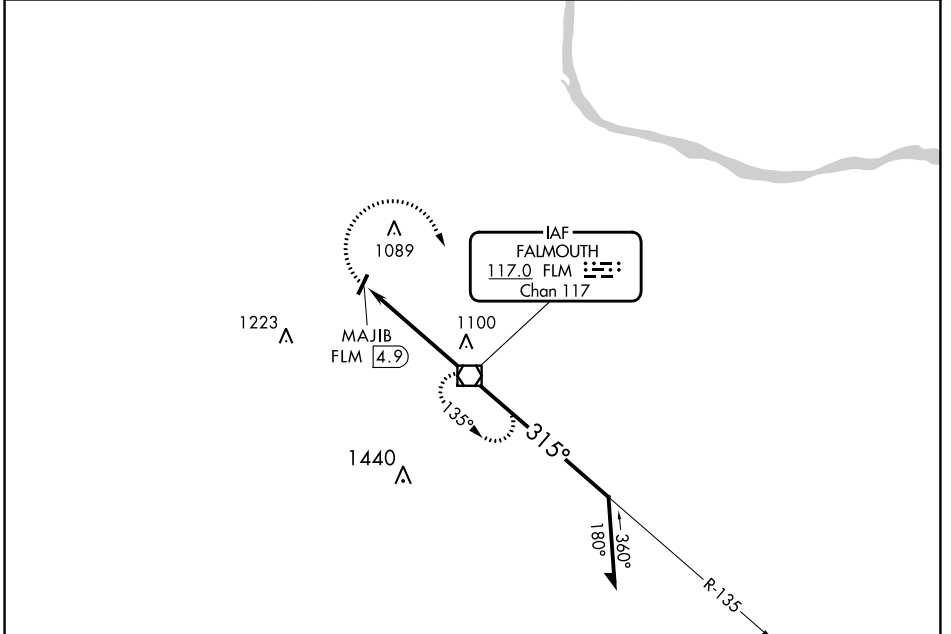
VOR/DME FLM 117.0 Chan 117	APP CRS 315°	Rwy Idg TDZE Apt Elev N/A N/A 899
--	------------------------	---

VOR-A
GENE SNYDER (K62)

▼ Night landing: Rwy 03 NA. When local altimeter setting not received, use Cincinnati/Northern Kentucky Intl altimeter setting and increase all MDA 60 feet. Helicopter visibility reduction below 1 SM NA.

MISSED APPROACH: Climbing right turn to 2500 direct FLM VOR/DME and hold.

AWOS-3 123.825	CINCINNATI APP CON 121.0 254.25	UNICOM 122.7 (CTAF) 0
--------------------------	---	---------------------------------



FAF to MAP 4.9 NM					CATEGORY	A	B	C	D
Knots	60	90	120	150	180	1400-1	501 (600-1)	NA	
Min:Sec	4:54	3:16	2:27	1:58	1:38				

SE-1, 26 DEC 2024 to 23 JAN 2025

SE-1, 26 DEC 2024 to 23 JAN 2025