

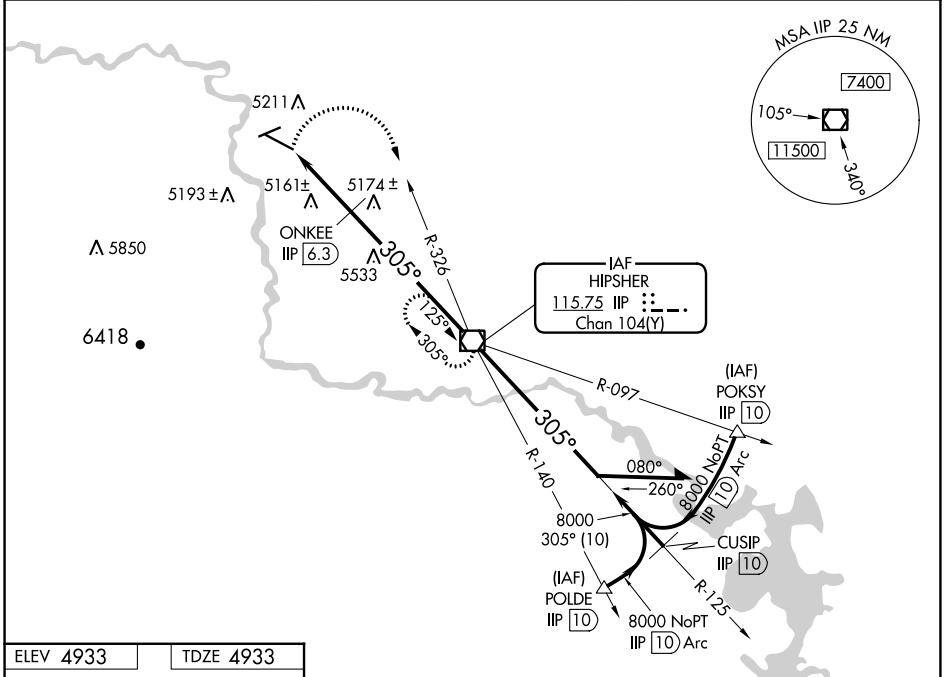
VOR/DME IIP 115.75 Chan 104(Y)	APP CRS 305°	Rwy Idg TDZE Apt Elev 6534 4933 4933
--	------------------------	--

VOR RWY 29

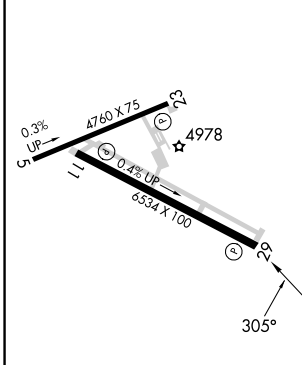
CONVERSE COUNTY (DGW)

MISSSED APPROACH: Climbing right turn to 8000 via heading 160° and IIP VOR/DME R-326 to IIP VOR/DME and hold, continue climb-in-hold to 8000.

ASOS 135.225	DENVER CENTER 135.6 363.025	UNICOM 122.8 (CTAF)
------------------------	---------------------------------------	-------------------------------



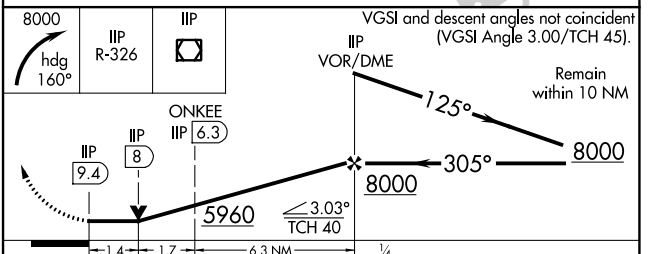
ELEV 4933	TDZE 4933
-----------	-----------



REIL Rwy 11 and 29
MIRL Rws 11-29 and 5-23

FAF to MAP 9.4 NM

Knots	60	90	120	150	180
Min:Sec	9:24	6:16	4:42	3:46	3:08



CATEGORY	A	B	C	D
S-29	5960-1¼ 1027 (1100-1¼)	5960-1½ 1027 (1100-1½)	5960-3	1027 (1100-3)
CIRCLING	5960-1¼ 1027 (1100-1¼)	5960-1½ 1027 (1100-1½)	5960-3	1027 (1100-3)
ONKEE FIX MINIMUMS				
S-29	5420-1	487 (500-1)	5420-1½ 487 (500-1½)	5420-1½ 487 (500-1½)
CIRCLING	5520-1	587 (600-1)	5680-2¼ 747 (800-2¼)	5820-3 887 (900-3)

NW-1, 26 DEC 2024 to 23 JAN 2025

NW-1, 26 DEC 2024 to 23 JAN 2025