

WAAS CH 53643 W18A	APP CRS 175°	Rwy Idg TDZE Apt Elev	4001 854 870
--	------------------------	-----------------------------	---

RNAV (GPS) RWY 18

JONES MEML (3F7)

RNP APCH.

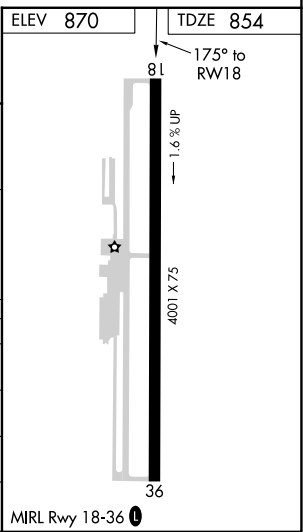
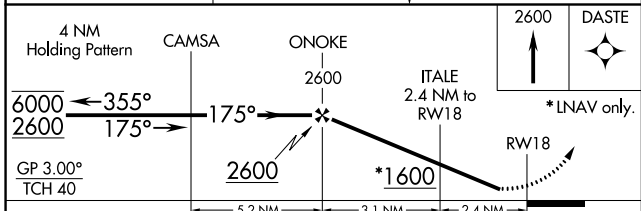
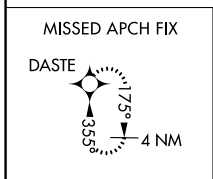
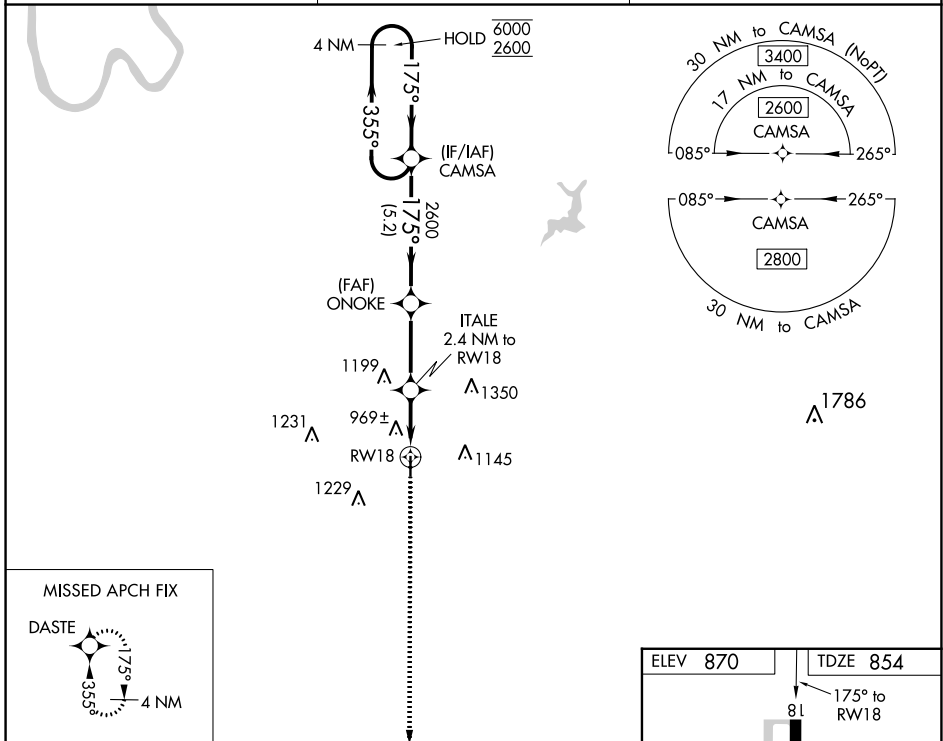
▼ Rwy 18 helicopter visibility reduction below 3/4 SM NA.
▲ NA Baro-VNAV NA. Use Cushing altimeter setting.

MISSED APPROACH: Climb to 2600 direct DASTE and hold.

CUH AWOS-3
118.25

KANSAS CITY CENTER
127.8 319.1

CTAF
122.9



CATEGORY	A	B	C	D
LPV DA	1156-1	302 (300-1)		NA
LNAV/VNAV DA	1191-1	337 (400-1)		NA
LNAV MDA	1280-1	426 (500-1)	1280-1¼ 426 (500-1¼)	NA
C CIRCLING	1380-1 510 (600-1)	1500-1 630 (700-1)	1600-2 730 (800-2)	NA

SC-1, 26 DEC 2024 to 23 JAN 2025

SC-1, 26 DEC 2024 to 23 JAN 2025