

| | | |
|--|------------------------|---|
| WAAS CH 49138 W09A | APP CRS 089° | Rwy Idg 4043 TDZE 1243 Apt Elev 1243 |
|--|------------------------|---|

RNAV (GPS) RWY 9

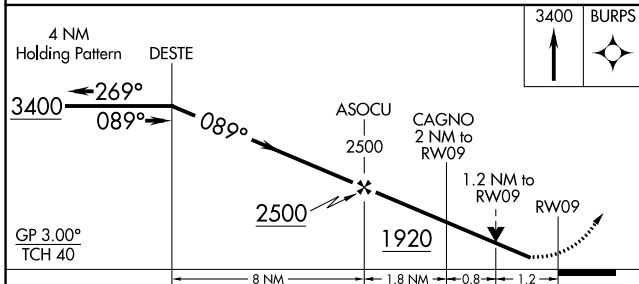
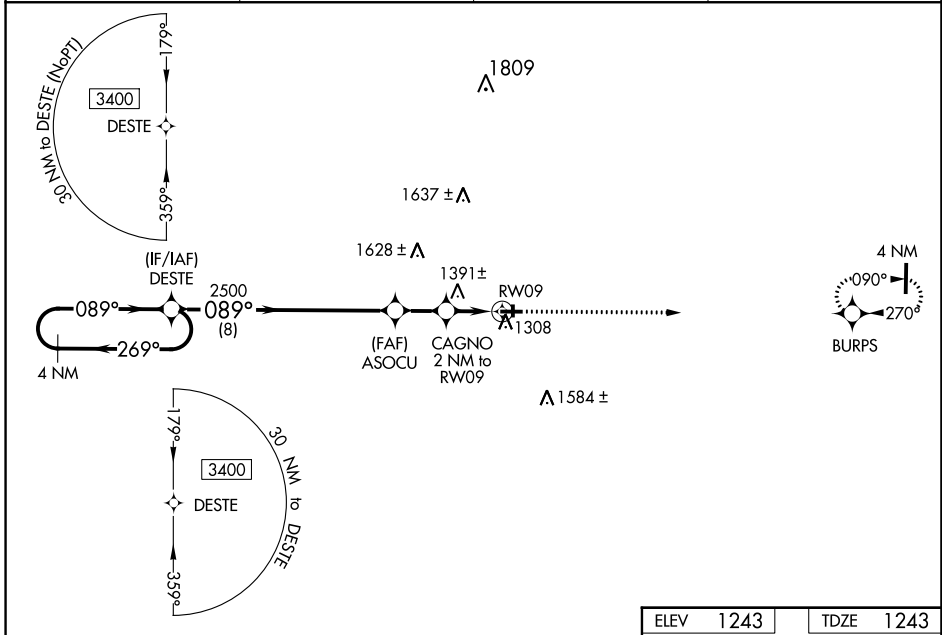
CUMBERLAND MUNI (UBE)

RNP APCH - GPS

▼ Baro-VNAV NA when using Rice Lake altimeter setting. For uncompensated Baro-VNAV systems, LNAV/VNAV NA below -17°C or above 54°C. Rwy 9 helicopter visibility reduction below ¼ SM NA. VDP NA when using Rice Lake altimeter setting. When local altimeter setting not received, use Rice Lake altimeter setting; increase LPV DA to 1536 feet and LNAV/VNAV DA to 1562 feet and all MDA 60 feet; increase LNAV/VNAV all Cats visibility ¼ mile and increase LNAV Cat C/D visibility and Circling Cat C/D visibility ¼ mile. Circling Rwy 18, 36 NA at night.

MISSED APPROACH: Climb to 3400 direct BURPS and hold.

| | | | |
|----------------------------|--|-----------------------|---------------------------------|
| AWOS-3PT 119.175 | MINNEAPOLIS CENTER 125.3 335.6 | GCO 121.725 | UNICOM 122.8 (CTAF) 0 |
|----------------------------|--|-----------------------|---------------------------------|



| | | | |
|------|------|------|------|
| ELEV | 1243 | TDZE | 1243 |
|------|------|------|------|

| CATEGORY | A | B | 1.9 NM C | D |
|--------------|-----------------------|-----------------------|-----------------------|-------------------------|
| LPV DA | 1493-1 | | 250 (300-1) | |
| LNAV/VNAV DA | 1519-1 | | 276 (300-1) | |
| LNAV MDA | 1660-1 | 417 (500-1) | 1660-1½ | 417 (500-1½) |
| CIRCLING | 1660-1 417 (500-1) | 1940-1 697 (700-1) | 1940-2 697 (700-2) | 1980-2¼ 737 (800-2¼) |

