

WAAS CH 86718 W17A	APP CRS 174°	Rwy Idg 5001 TDZE 971 Apt Elev 971
--	------------------------	---

RNAV (GPS) RWY 17

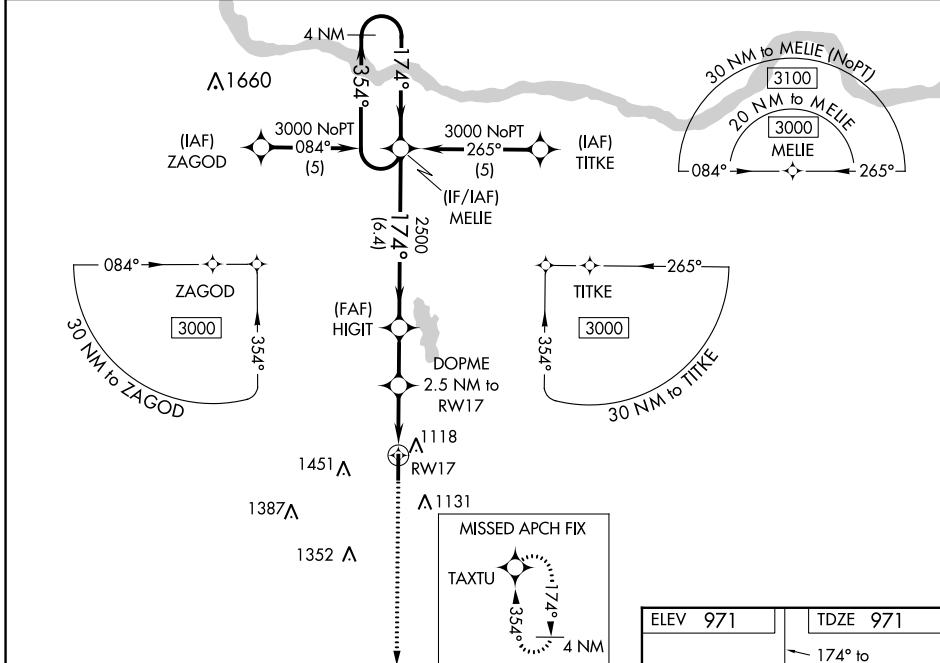
PAULS VALLEY MUNI (PVJ)

RNP APCH.

⚠ When local altimeter setting not received, use Ardmore Downtown Exec altimeter setting and increase all DA 97 feet and all MDA 100 feet and LNAV/VNAV visibility ¼ SM all Cats, LNAV Cat C, D visibility ¼ SM and Circling Cat C visibility ¼ SM, and Cat D visibility ½ SM. Baro-VNAV and VDP NA when using Ardmore Downtown Exec altimeter setting. For uncompensated Baro-VNAV systems, LNAV/VNAV NA below -16°C or above 46°C.

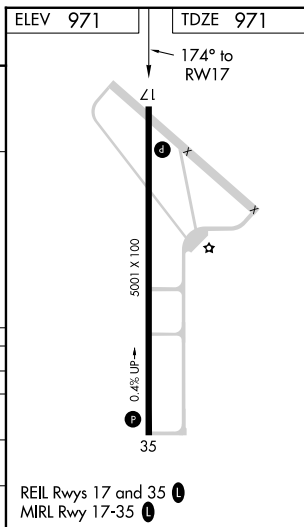
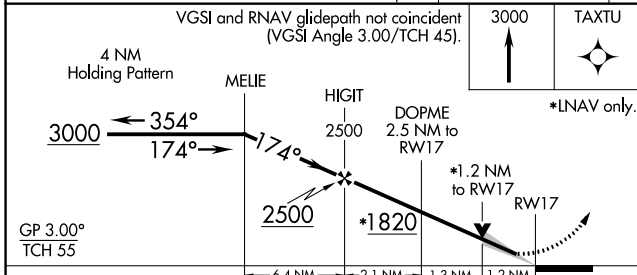
MISSED APPROACH:
Climb to 3000 direct
TAXTU and hold.

AWOS-3 118.675	FORT WORTH CENTER 124.75 323.0	UNICOM 122.8 (CTAF) 0
--------------------------	--	---------------------------------



SC-1, 26 DEC 2024 to 23 JAN 2025

SC-1, 26 DEC 2024 to 23 JAN 2025



GP 3.00° TCH 55	MELIE	HIGIT 2500	DOPME 2.5 NM to RWY17	RWY17
	6.4 NM	2.1 NM	1.3 NM	1.2 NM
CATEGORY	A	B	C	D
LPV DA		1171-1	200 (200-1)	
LNAV/VNAV DA		1413-1½	442 (500-1½)	
LNAV MDA	1420-1	449 (500-1)	1420-1¼ 449 (500-1¼)	1420-1¾ 449 (500-1¾)
CIRCLING	1440-1	469 (500-1)	1540-1½ 569 (600-1½)	1760-2 789 (800-2)

REIL Rwy 17 and 35 0
MIRL Rwy 17-35 0