

WAAS CH <b>78325</b> <b>W02A</b>	APP CRS <b>018°</b>	Rwy Idg TDZE Apf Elev	<b>6001</b> <b>484</b> <b>501</b>
--	------------------------	-----------------------------	---

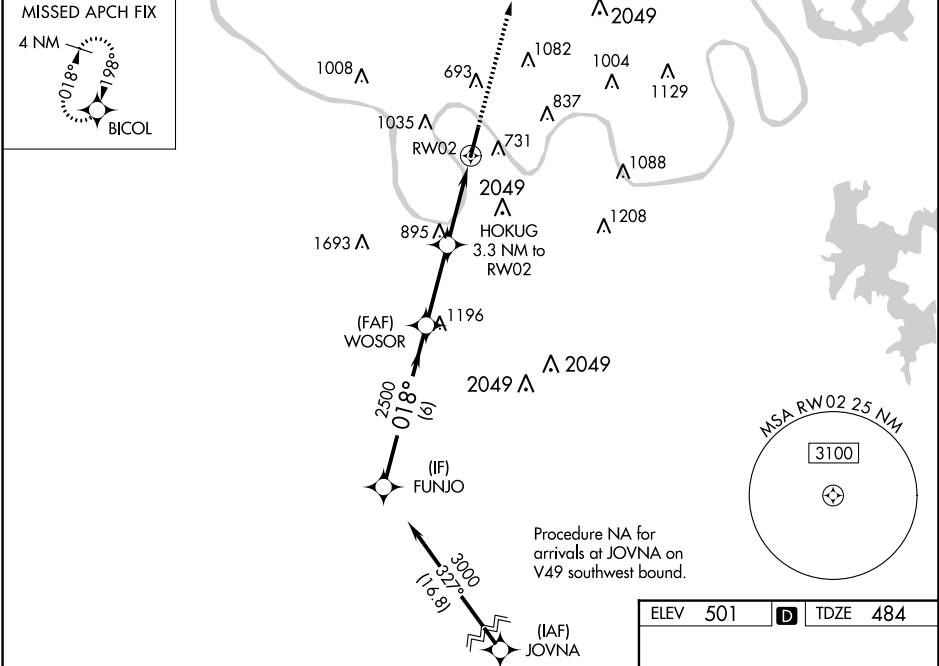
# RNAV (GPS) RWY 2

JOHN C TUNE (JWN)

**▽** For uncompensated Baro-VNAV systems, LNAV/VNAV NA below -15°C (5°F) or above 54°C (130°F). Circling NA E of Rwy 2-20. Baro-VNAV and VDP NA when using Nashville Intl altimeter setting. DME/DME RNP-0.3 NA. When local altimeter setting not received, use Nashville Intl altimeter setting and increase all DAs 39 feet and all MDAs 40 feet; increase LPV visibility all Cats 1/8 SM, LNAV visibility Cat B 1/4 SM.

**MISSED APPROACH:**  
Climb to 3000 direct BICOL and hold.

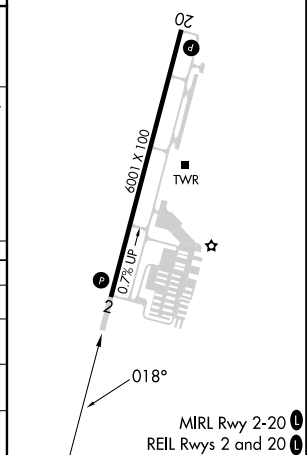
ATIS <b>127.075</b>	NASHVILLE APP CON <b>119.35 372.0</b>	JOHN TUNE TOWER * <b>119.45 (CTAF) 0</b>	GND CON <b>121.7</b>	CLNC DEL <b>121.7</b>	CLNC DEL <b>124.55</b> (when twr closed)	UNICOM <b>122.7</b>
------------------------	--	---	-------------------------	--------------------------	--	------------------------



Procedure NA for arrivals at JOVNA on V49 southwest bound.

ELEV 501	<b>D</b>	TDZE 484
----------	----------	----------

GP 3.00° TCH 40	FUNJO 3000 → 018° → 2500 → *1540 → RW02			
	6 NM (A)		3 NM (B)	1.2 NM (C)
CATEGORY	A	B	C	D
LPV DA	734-7/8		250 (300-7/8)	
LNAV/VNAV DA	1079-2 1/2		595 (600-2 1/2)	
LNAV MDA	1160-1	676 (700-1)	1160-2	676 (700-2)
<b>C</b> CIRCLING	1200-1	699 (700-1)	1340-2 3/4	839 (900-2 3/4)



SE-1, 26 DEC 2024 to 23 JAN 2025

SE-1, 26 DEC 2024 to 23 JAN 2025