

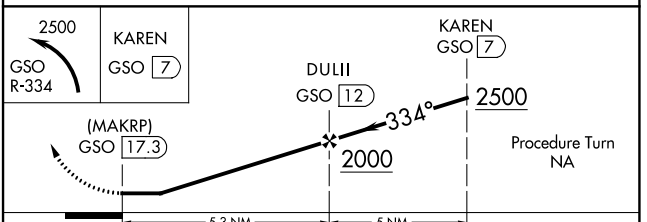
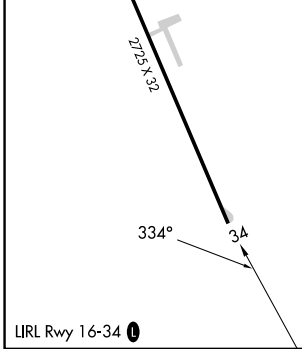
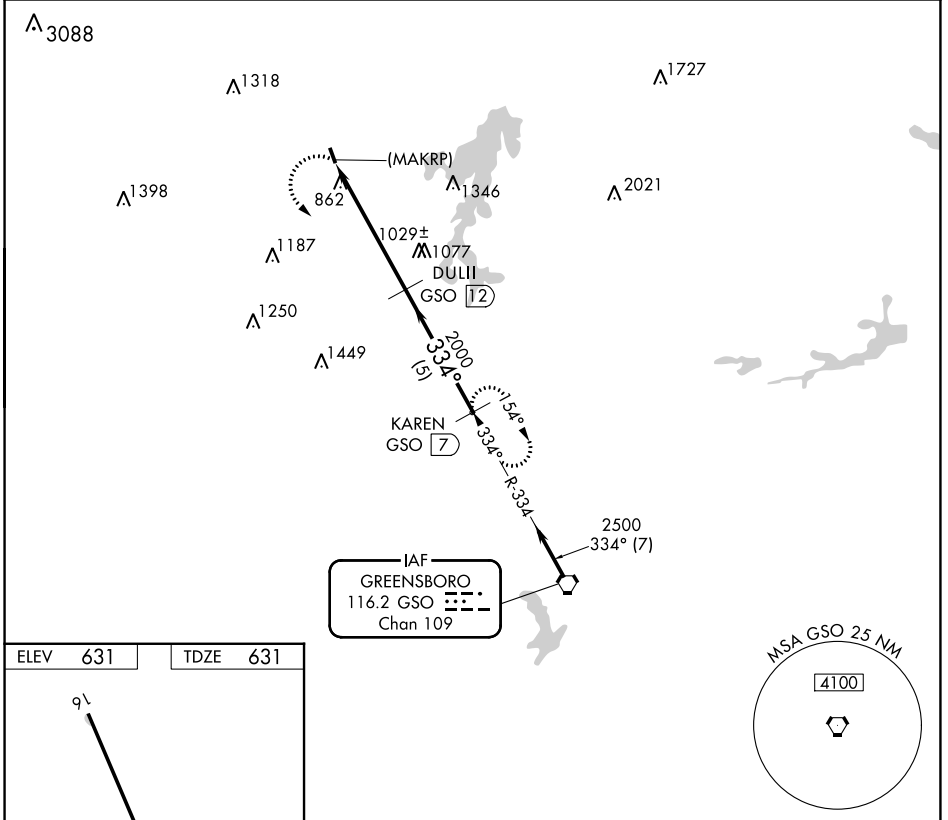
VORTAC GSO	APP CRS	Rwy Idg TDZE	2725
116.2	334°	631	
Chan 109		Apt Elev	631

# VOR/DME or GPS RWY 34

MEADOW BROOK FLD (N63)

**NA** Use Reidsville altimeter setting. Procedure NA at night. MISSED APPROACH: Climbing left turn to 2500 via GSO R-334 to KAREN GSO 7 DME and hold.

SIF AWOS-3 <b>119.775</b>	GREENSBORO APP CON <b>124.35 269.225</b>	UNICOM <b>123.0 (CTAF) 0</b>
------------------------------	---	---------------------------------



CATEGORY	A	B	C	D
S-34	1400-1 769 (800-1)	1400-1¼ 769 (800-1¼)		NA
CIRCLING	1400-1 769 (800-1)	1440-1¼ 809 (900-1¼)		NA

SE-2, 26 DEC 2024 to 23 JAN 2025

SE-2, 26 DEC 2024 to 23 JAN 2025