



WAAS CH <b>40426</b> W29A	APP CRS <b>291°</b>	Rwy ldg TDZE Apt Elev	<b>8900</b> <b>7078</b> <b>7096</b>
---------------------------------	------------------------	-----------------------------	-------------------------------------------

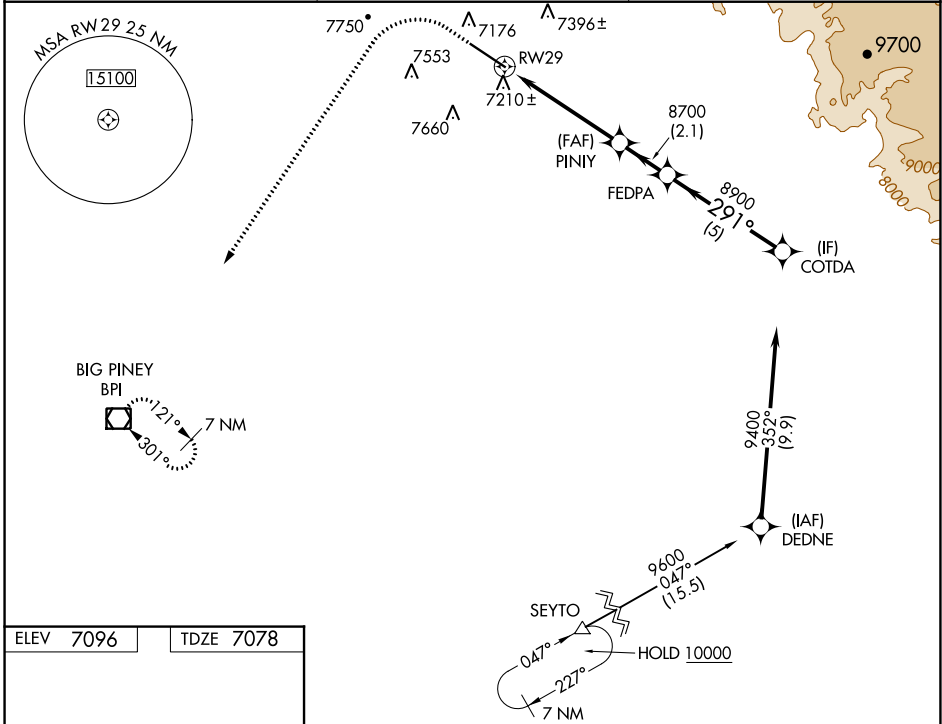
# RNAV (GPS) RWY 29

RALPH WENZ FLD (PNA)

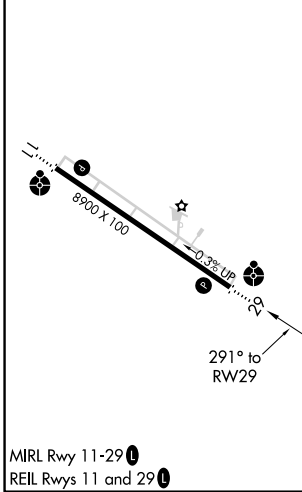
**⚠** Baro-VNAV NA. When local altimeter setting not received, use Big Piney altimeter setting and increase LPV DA to 7386 feet and all visibilities ¼ SM; increase LNAV/VNAV DA to 7664 feet and all visibilities ½ SM; increase all MDA 60 feet and LNAV Cats C/D visibility ¼ SM. Circling NA south of Rwy 11/29. DME/DME RNP-0.3 NA. Helicopter visibility reduction below ¾ SM NA. VDP NA with Big Piney altimeter setting.




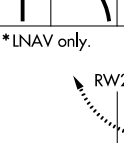
**ODALS**  MISSED APPROACH: Climb to 7600 then climbing left turn to 10000 direct BPI VOR/DME and hold.

AWOS-3 <b>118.325</b>	SALT LAKE CENTER <b>128.35 239.25</b>	UNICOM <b>122.8 (CTAF)</b> 
--------------------------	------------------------------------------	-----------------------------------------------------------------------------------------------------------------



ELEV 7096	TDZE 7078
-----------	-----------



7600	10000	BPI	VGSI and RNAV glidepath not coincident (VGSI Angle 2.83/TCH 40).	COTDA
				
*LNAV only.		*1.5 NM to RWY29	PINIY	FEDPA
			8700	8900
1.5 NM		3.5 NM	2.1 NM	5 NM
CATEGORY	A	B	C	D
LPV DA	7328-¾ 250 (300-¾)			
LNAV/VNAV DA	7606-1¾ 528 (600-1¾)			
LNAV MDA	7600-1	522 (600-1)	7600-1½	522 (600-1½)
CIRCLING	7640-1	544 (600-1)	7840-2¼ 744 (800-2¼)	7980-3 884 (900-3)

NW-1, 26 DEC 2024 to 23 JAN 2025

NW-1, 26 DEC 2024 to 23 JAN 2025