

APP CRS <b>213°</b>	Rwy Idg <b>5752</b>
	TDZE <b>11</b>
	Apt Elev <b>12</b>

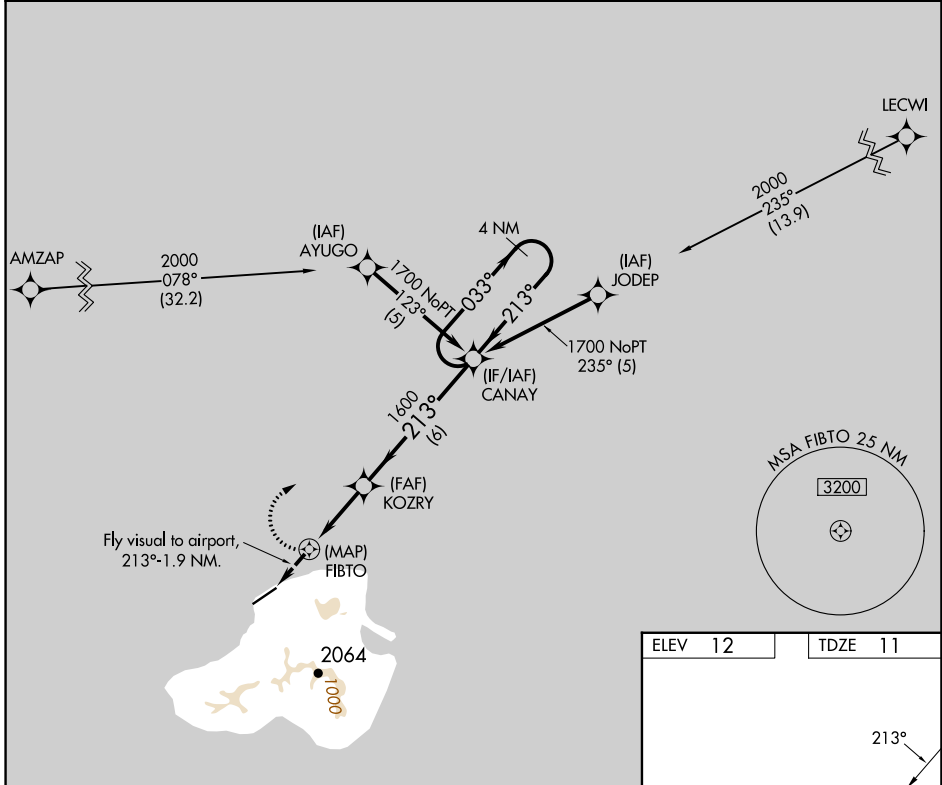
# RNAV (GPS) RWY 23

KOSRAE (TTK)(PTSA)

**⚠** Circling not authorized southeast of Rwy 5-23. Obtain local altimeter setting on CTAF; when not received, procedure not authorized. DME/DME RNP-0.3 NA. No controlled airspace below 5500.

**MISSED APPROACH:** Climbing right turn to 1700 direct CANAY WP and hold.

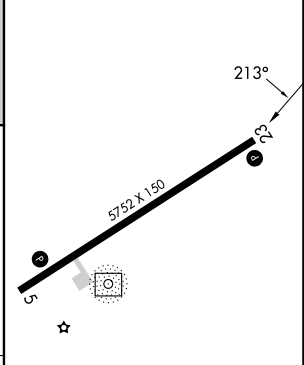
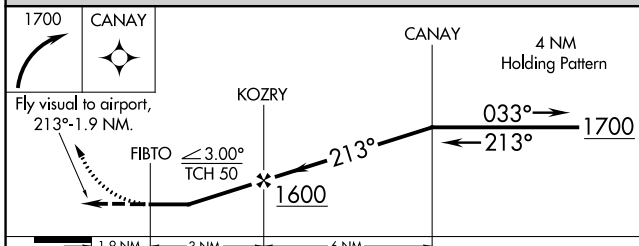
KOSRAE RADIO  
**123.6 (CTAF) 0**



PAC, 26 DEC 2024 to 20 FEB 2025

PAC, 26 DEC 2024 to 20 FEB 2025

ELEV 12	TDZE 11
---------	---------



CATEGORY	A	B	C	D
LNVA MDA	800-2	789 (800-2)	800-2¼ 789 (800-2¼)	800-2½ 789 (800-2½)
CIRCLING	800-2	788 (800-2)	800-2¼ 788 (800-2¼)	800-2½ 788 (800-2½)

MIRL Rwy 5-23 0  
REIL Rws 5 and 23 0