

APP CRS	Rwy Idg	5752
058°	TDZE	10
	Apt Elev	12

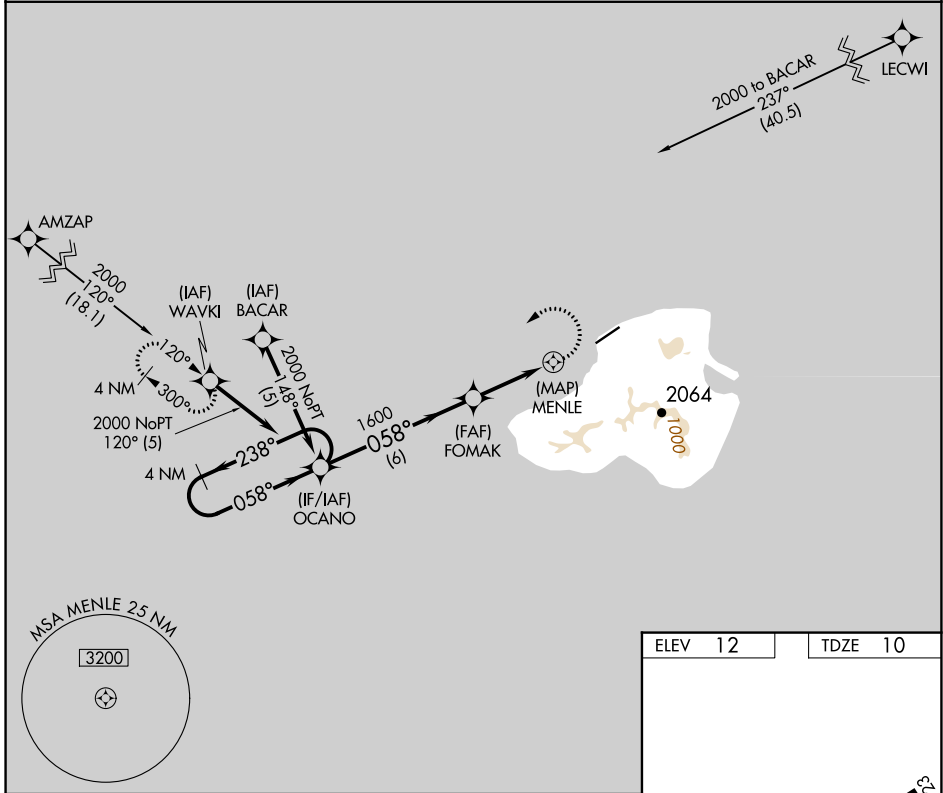
RNAV (GPS) RWY 5

KOSRAE (TTK)(PTSA)

⚠ Circling not authorized southeast of Rwy 5-23. Obtain local altimeter setting on CTAF; when not received, procedure not authorized. DME/DME RNP-0.3 NA. No controlled airspace below 5500.

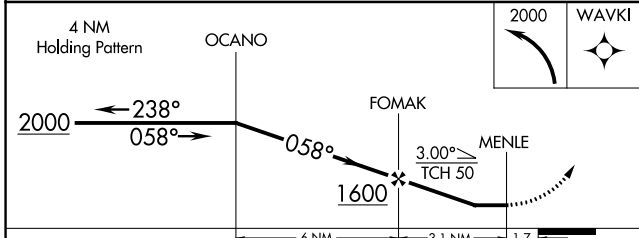
⚠ MISSED APPROACH: Climbing left turn to 2000 direct WAVKI WP and hold.

KOSRAE RADIO
123.6 (CTAF) **📻**



PAC, 26 DEC 2024 to 20 FEB 2025

PAC, 26 DEC 2024 to 20 FEB 2025



ELEV 12	TDZE 10
---------	---------

MIRL Rwy 5-23 **📻**
REIL Rwys 5 and 23 **📻**

CATEGORY	A	B	C	D
LNVA MDA	460-2 450 (500-2)			
CIRCLING	520-2 508 (600-2)		580-2 568 (600-2)	