

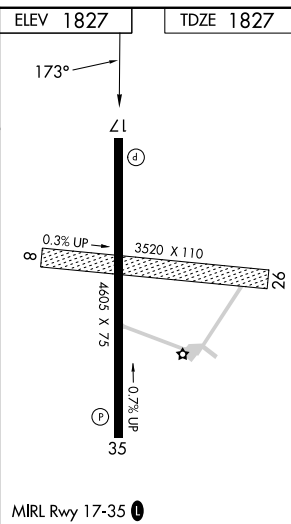
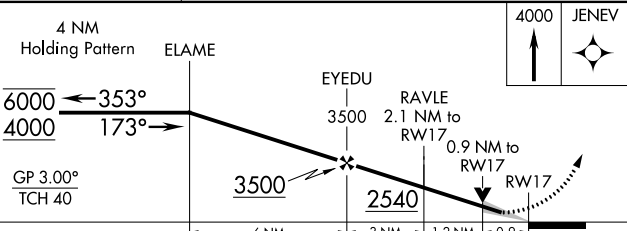
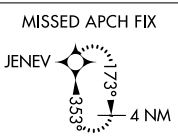
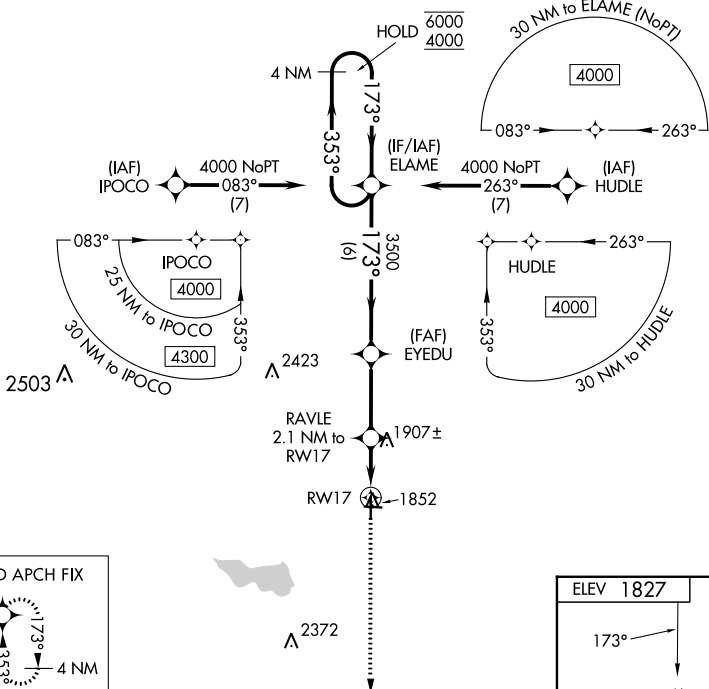
WAAS CH <b>53608</b> <b>W17A</b>	APP CRS <b>173°</b>	Rwy Idg <b>4605</b> TDZE <b>1827</b> Apt Elev <b>1827</b>
--	------------------------	---

# RNAV (GPS) RWY 17

CURTIS FLD (BBD)

RNP APCH - GPS.	MISSED APPROACH: Climb to 4000 direct JENEV and hold.
<p>▼ For uncompensated Baro-VNAV systems, LNAV/VNAV NA below -18°C or above 54°C.                  ▲ Baro-VNAV and VDP NA when using JCT altimeter setting. When local altimeter setting not received, use JCT altimeter setting: increase LPV DA to 2144 feet; increase LNAV/VNAV DA to 2194 feet; increase all MDAs 120 feet and LNAV visibility Cat C 3/8 SM.</p>	

AWOS-3 <b>118.375</b>	HOUSTON CENTER <b>132.35 317.5</b>	UNICOM <b>122.8 (CTAF) 0</b>
--------------------------	---------------------------------------	---------------------------------



CATEGORY	A	B	C	D
LPV DA	2027-1	200 (200-1)		NA
LNAV/VNAV DA	2077-1	250 (300-1)		NA
LNAV MDA	2160-1	333 (400-1)		NA

SC-3, 26 DEC 2024 to 23 JAN 2025

SC-3, 26 DEC 2024 to 23 JAN 2025