

WAAS CH 99344 W01A	APP CRS 013°	Rwy Idg TDZE 86 Apt Elev 86	5398
--	------------------------	---	-------------

RNAV (GPS) RWY 1

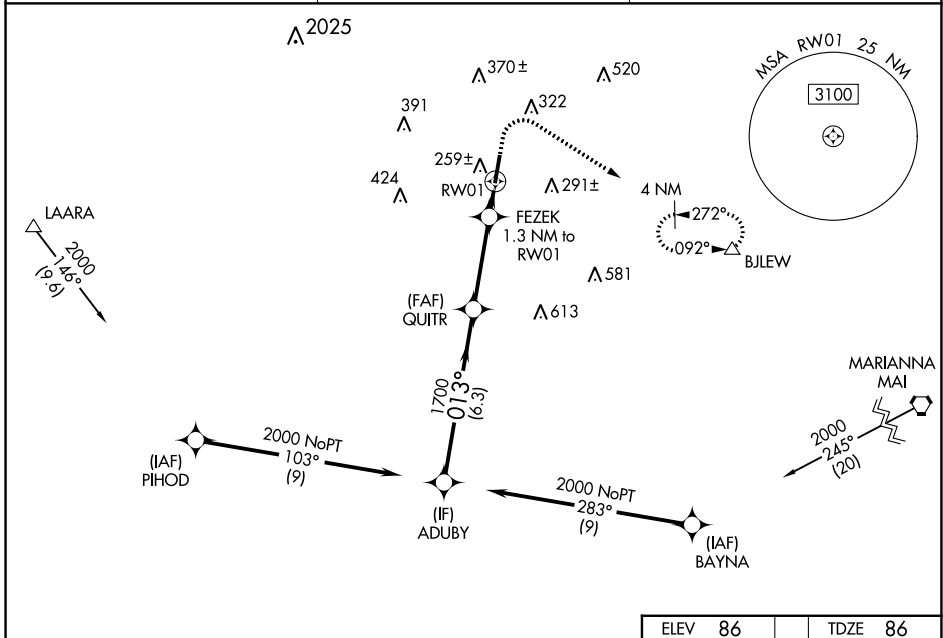
TRI-COUNTY (BCR)

RNP APCH - GPS.

▼ Helicopter visibility reduction below 3/4 SM NA. Baro-VNAV NA when using Marianna altimeter setting. Circling Rwy 19 NA at night. When local altimeter setting not received, use Marianna altimeter setting; increase LPV DA to 468 and LNAV/VNAV DA to 573 and all visibilities 3/8 SM; increase all MDAs 60 feet and visibility Cat C 1/4 SM.

MISSED APPROACH: Climb to 700 then climbing right turn to 2000 direct BJLEW and hold.

ASOS 119.825	CAIRNS APP CON ★ 133.75 270.35	UNICOM 122.725 (CTAF) 0
------------------------	--	-----------------------------------

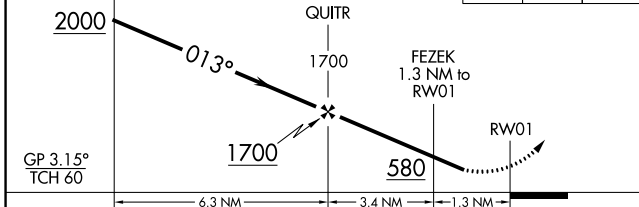


SE-3, 26 DEC 2024 to 23 JAN 2025

SE-3, 26 DEC 2024 to 23 JAN 2025

VGSI and RNAV glidepath not coincident (VGSI Angle 3.00/TCH 44).

700	2000	BJLEW
↑	↘	△



ELEV	86	TDZE	86
------	----	------	----

CATEGORY	A	B	C	D
LPV DA	415-1	329 (400-1)		NA
LNAV/VNAV DA	520-1 1/4	434 (500-1 1/4)		NA
LNAV MDA	520-1	434 (500-1)	520-1 1/4 434 (500-1 1/4)	NA
C CIRCLING	580-1 494 (500-1)	600-1 514 (600-1)	680-1 1/2 594 (600-1 1/2)	NA

