

NDB ITR <b>209</b>	APP CRS <b>139°</b>	Rwy Idg TDZE Apt Elev	<b>5199</b> <b>4218</b> <b>4218</b>
-----------------------	------------------------	-----------------------------	---

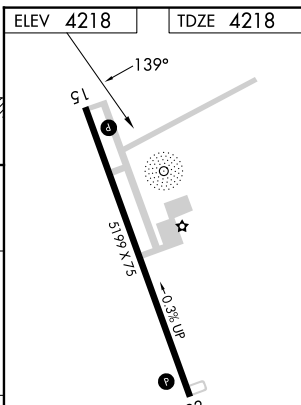
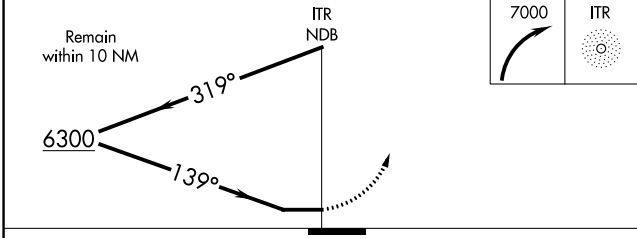
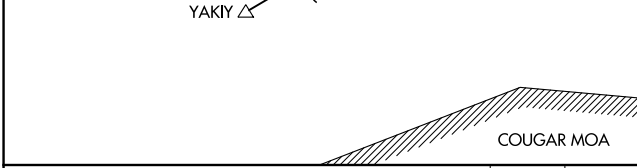
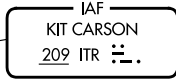
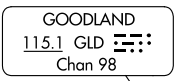
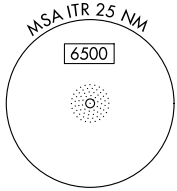
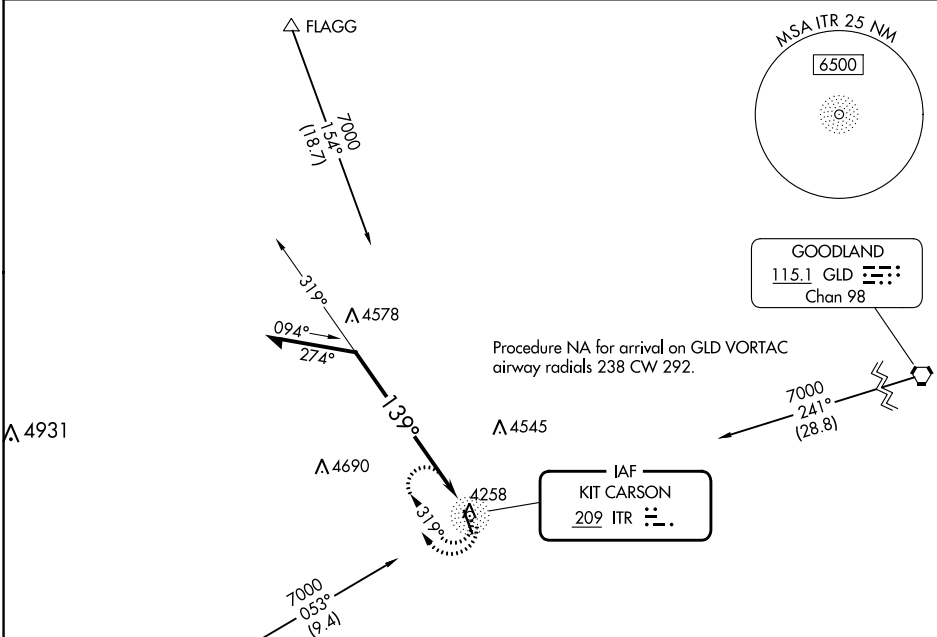
# NDB RWY 15

KIT CARSON COUNTY (ITR)

**▽**  
**▲**

MISSED APPROACH: Climbing right turn to 7000 in ITR NDB holding pattern, continue climb-in-hold to 7000.

ASOS <b>135.225</b>	DENVER CENTER <b>132.7 226.675</b>	UNICOM <b>122.8 (CTAF) 0</b>
------------------------	---------------------------------------	---------------------------------



CATEGORY	A	B	C	D
S-15	4940-1	722 (800-1)	4940-2	722 (800-2)
<b>C</b> CIRCLING	4940-1	722 (800-1)	4940-2 722 (800-2)	4940-2 1/4 722 (800-2 1/4)

MIRL Rwy 15-33 0  
REIL Rwys 15 and 33 0

SW-1, 26 DEC 2024 to 23 JAN 2025

SW-1, 26 DEC 2024 to 23 JAN 2025