

APP CRS	Rwy Idg	4410
118°	TDZE	1703
	Apt Elev	1715

RNAV (GPS) RWY 12

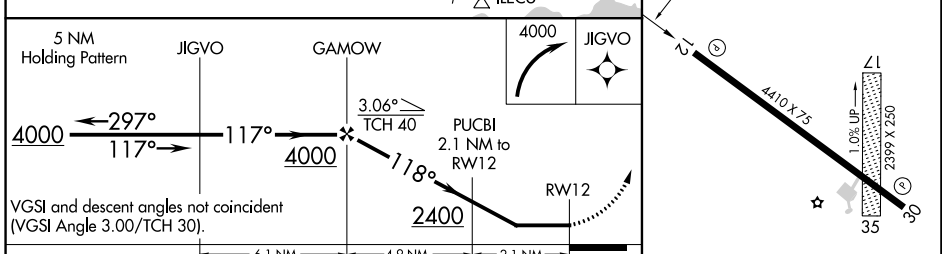
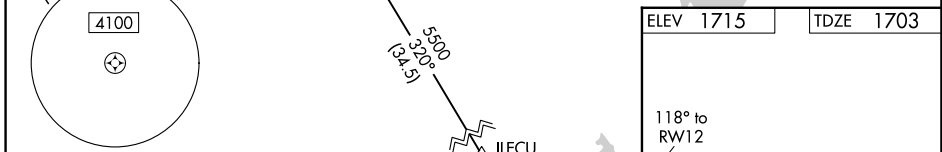
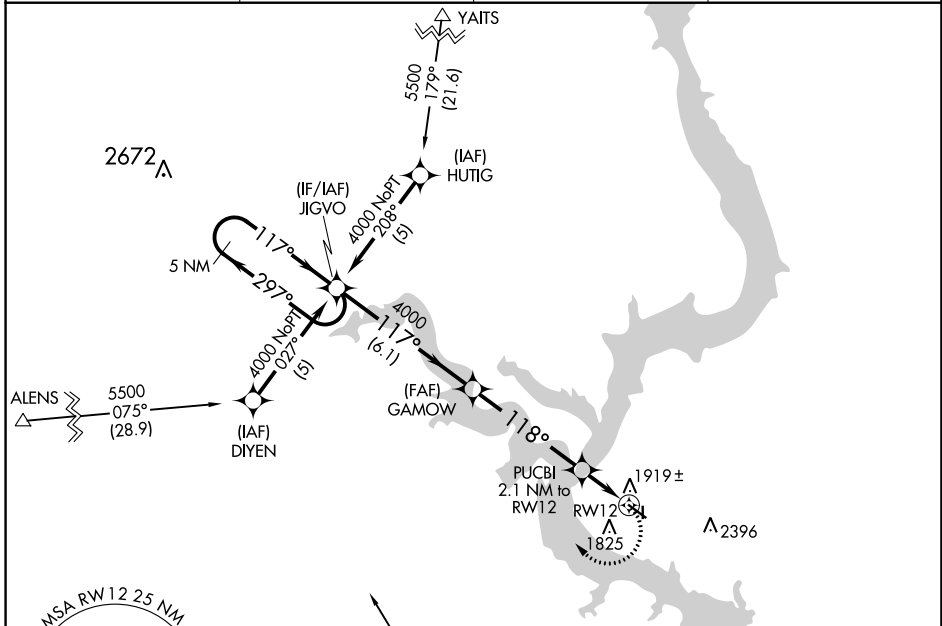
MOBRIDGE MUNI (MBG)

RNP APCH-GPS.

▼ Rwy 12 helicopter visibility reduction below 1 SM NA. If local altimeter setting not received, use Pierre Rgnl altimeter setting and increase all MDAs 180 feet. Circling NA for Cat C and D northeast of Rwy 12-30. Procedure NA at night. Circling NA to Rwys 17 and 35.

▲ MISSED APPROACH: Climbing right turn to 4000 direct JIGVO and hold.

ASOS 121.425	MINNEAPOLIS CENTER 135.25 256.7	GCO 121.725	UNICOM 122.8 (CTAF) 0
------------------------	---	-----------------------	---------------------------------



CATEGORY	A	B	C	D
LNAV MDA	2260-1	557 (600-1)	2260-1½ 557 (600-1½)	2260-1¾ 557 (600-1¾)
CIRCLING	2360-1	645 (700-1)	2360-1¾ 645 (700-1¾)	2560-2¾ 845 (900-2¾)

NC-1, 26 DEC 2024 to 23 JAN 2025

NC-1, 26 DEC 2024 to 23 JAN 2025