

WAAS CH <b>72622</b> <b>W30A</b>	APP CRS <b>298°</b>	Rwy Idg <b>4410</b> TDZE <b>1701</b> Apt Elev <b>1716</b>
--	------------------------	---

# RNAV (GPS) RWY 30

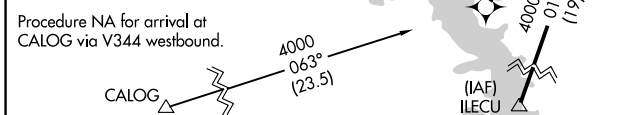
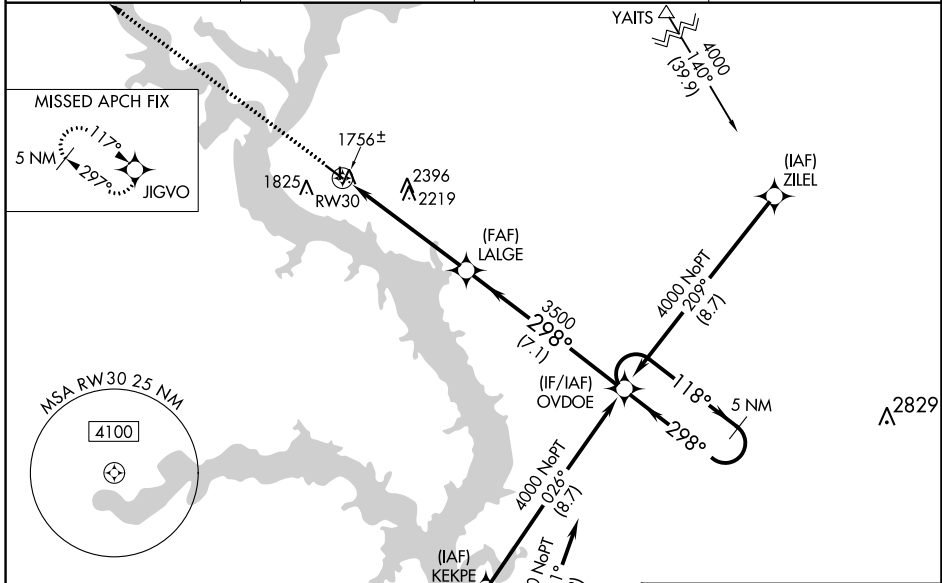
MOBRIDGE MUNI (MBG)

RNP APCH-GPS.

▼ Baro-VNAV NA when using Pierre Rgnl altimeter setting. For uncompensated Baro-VNAV systems, LNAV/VNAV NA below -18°C or above 33°C. Rwy 30 helicopter visibility below 3/4 SM NA. VDP NA with Pierre Rgnl altimeter setting. When local altimeter setting not received, use Pierre Rgnl altimeter setting and increase all DA 165 feet and all MDA 180 feet, increase LPV and LNAV/VNAV all Cats visibility 3/4 mile, LNAV Cat B visibility 1/2 mile, Cat C/D 1/2 mile, Circling Cat A/B/D 1/4 mile, Cat C 1/2 mile. Circling NA for Cat C and D northeast of Rwy 12-30. Circling Rwy 12 NA at night. Circling NA to Rwys 17 and 35.

MISSED APPROACH: Climb to 4000 direct JIGVO and hold.

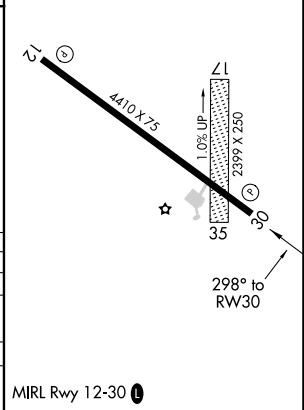
ASOS <b>121.425</b>	MINNEAPOLIS CENTER <b>135.25 256.7</b>	GCO <b>121.725</b>	UNICOM <b>122.8 (CTAF) 0</b>
------------------------	---	-----------------------	---------------------------------



ELEV 1716	TDZE 1701
-----------	-----------

4000	JIGVO	VGSi and RNAV glidepath not coincident (VGSi Angle 3.00/TCH 31).	5 NM Holding Pattern
	LALGE		
	OVD0E		
	RWY 30		
			GP 3.00° TCH 40

CATEGORY	A	B	C	D
LPV DA		2050-1 1/8	349 (400-1 1/8)	
LNAV/VNAV DA		1993-1	292 (300-1)	
LNAV MDA	2400-1	699 (700-1)	2400-2	699 (700-2)
CIRCLING	2400-1	684 (700-1)	2400-2	2560-2 3/4
			684 (700-2)	844 (900-2 3/4)



NC-1, 26 DEC 2024 to 23 JAN 2025

NC-1, 26 DEC 2024 to 23 JAN 2025