

LOC/DME I-TDF 108.7 Chan 24	APP CRS 060°	Rwy Idg TDZE Apt Elev 5702 604 609
--	------------------------	--

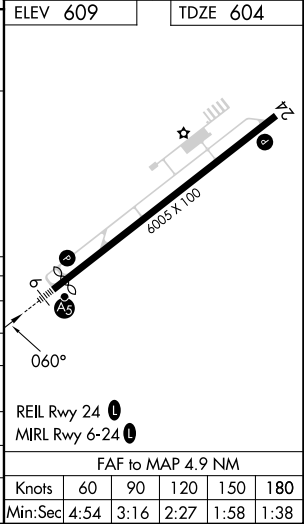
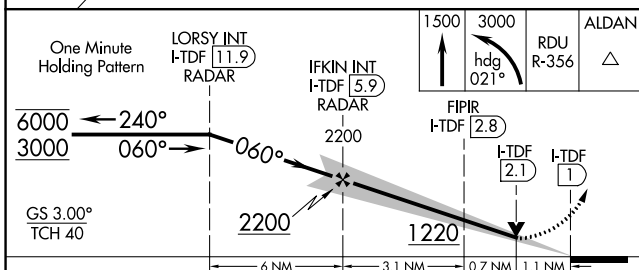
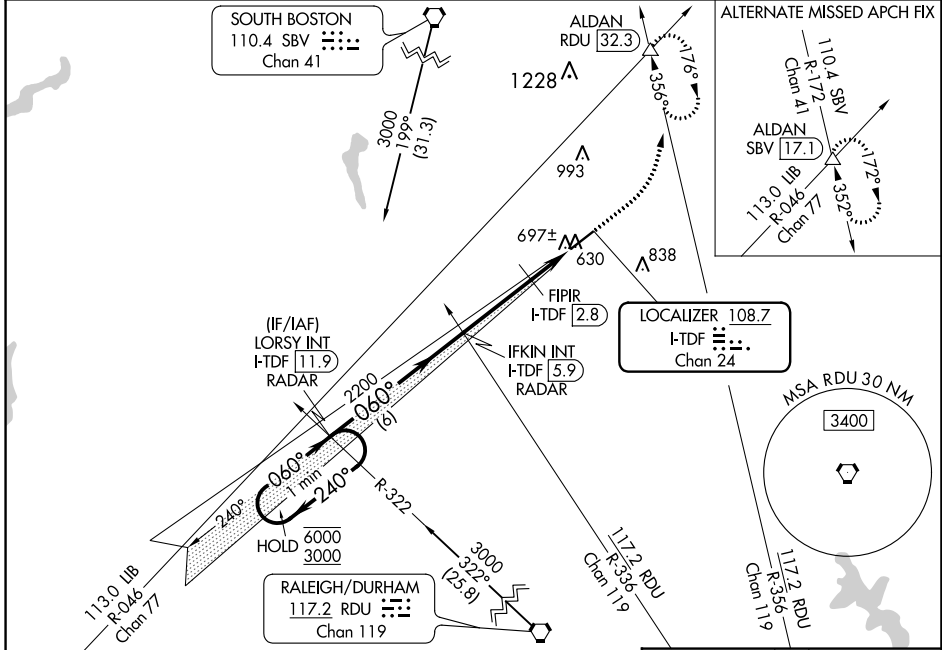
ILS or LOC RWY 6

RALEIGH RGNL AT PERSON COUNTY (TDF)

▼ For inop ALS, increase S-LOC 6 visibility Cats C/D to 1 3/4 SM and increase FIPR fix minimums
▲ NA S-LOC 6 visibility Cats C/D to 1 SM.

MALSR MISSED APPROACH: Climb to 1500 then climbing left turn to 3000 on heading 021° and on RDU VORTAC R-356 to ALDAN INT/RDU 32.3 DME and hold, continue climb-in-hold to 3000.

AWOS-3 126.725	RALEIGH APP CON 132.35 256.9	GCO 119.7	UNICOM 122.7 (CTAF) 0
--------------------------	--	---------------------	---------------------------------



CATEGORY	A	B	C	D
S-ILS 6	804-1/2 200 (200-1/2)			
S-LOC 6	1220-1/2	616 (700-1/2)	1220-1 3/8	616 (700-1 3/8)
CIRCLING	1220-1	611 (700-1)	1300-2 691 (700-2)	1300-2 1/4 691 (700-2 1/4)
FIPR FIX MINIMUMS				
S-LOC 6	980-1/2	376 (400-1/2)	980-5/8	376 (400-5/8)
CIRCLING	1080-1	471 (500-1)	1300-2 691 (700-2)	1300-2 1/4 691 (700-2 1/4)

REIL Rwy 24 0					
MIRL Rwy 6-24 0					
FAF to MAP 4.9 NM					
Knots	60	90	120	150	180
Min:Sec	4:54	3:16	2:27	1:58	1:38

SE-2, 26 DEC 2024 to 23 JAN 2025

SE-2, 26 DEC 2024 to 23 JAN 2025