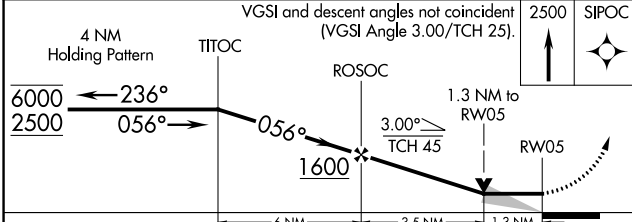
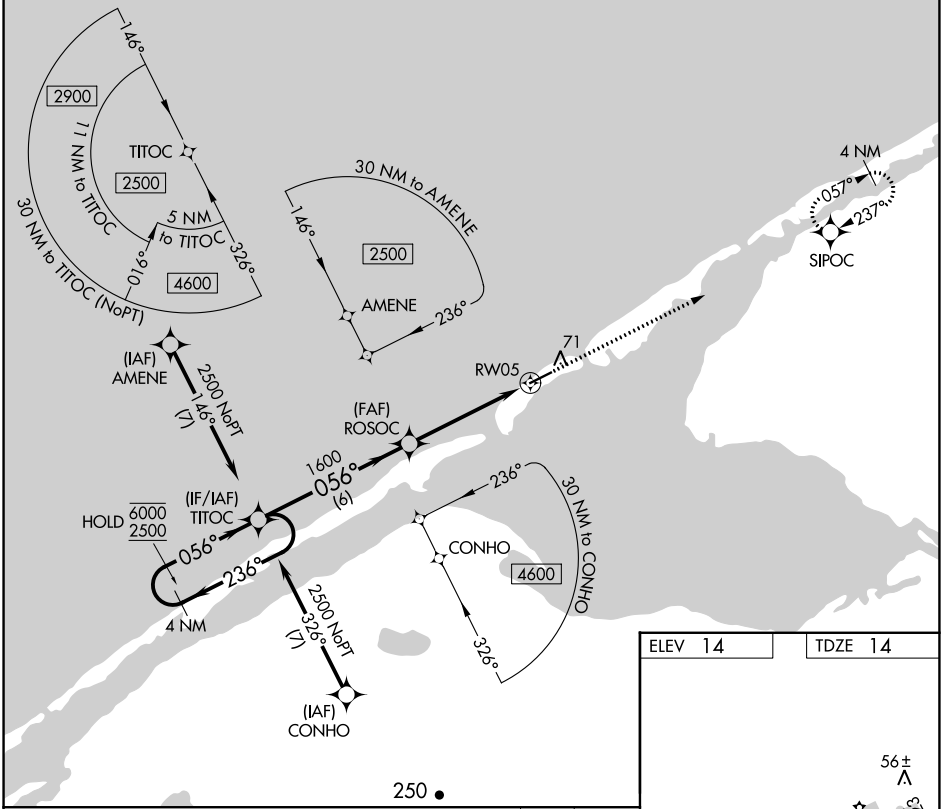


APP CRS <b>056°</b>	Rwy Idg TDZE Apt Elev	<b>4997</b> <b>14</b> <b>14</b>
------------------------	-----------------------------	---------------------------------------

# RNAV (GPS) RWY 5

SHISHMAREF (SHH) (PASH)

RNP AR APCH - GPS.		MISSED APPROACH: Climb to 2500 direct SIPOC and hold.	
AWOS-3P <b>121.1</b>	ANCHORAGE CENTER <b>119.2 263.0</b>	NOME RADIO <b>122.4</b>	CTAF <b>123.0</b>



ELEV 14	TDZE 14
---------	---------

MIRL Rwy 5-23

CATEGORY	A	B	C	D
LNVA MDA	460-1	446 (500-1)	460-1 3/8	446 (500-1 3/8)
CIRCLING	460-1 446 (500-1)	480-1 466 (500-1)	480-1 1/2 466 (500-1 1/2)	580-2 566 (600-2)

AK, 26 DEC 2024 to 20 FEB 2025

AK, 26 DEC 2024 to 20 FEB 2025