

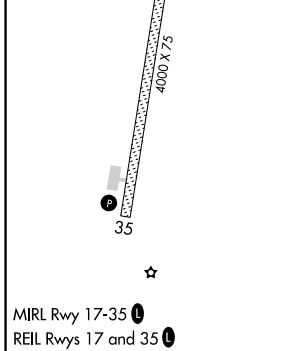
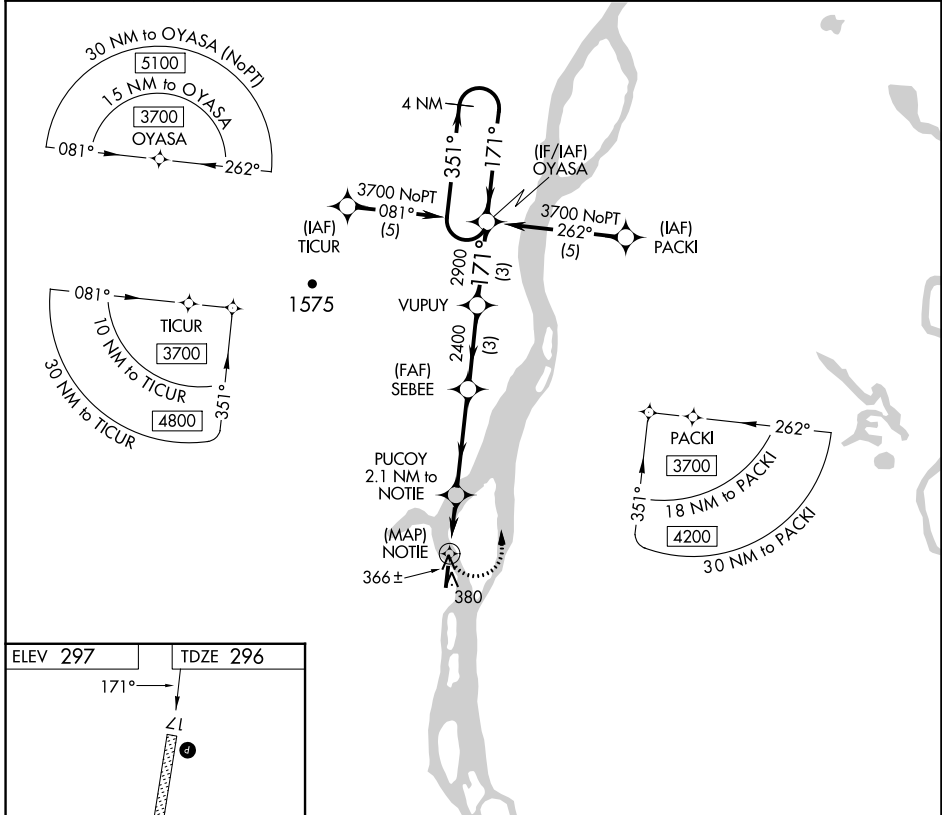
APP CRS	Rwy Idg	4000
171°	TDZE	296
	Apt Elev	297

RNAV (GPS) RWY 17

ANVIK (ANV)(PANV)

RNP APCH - GPS.	MISSED APPROACH: Climbing left turn to 3700 direct OYASA and hold, continue climb-in-hold to 3700.
Rwy 17 helicopter visibility reduction below 3/4 SM NA.	

AWOS-3P 133.55	ANCHORAGE CENTER 135.7 335.5	KENAI RADIO 122.4	UNICOM 122.7 (CTAF) 0
--------------------------	--	-----------------------------	---------------------------------



3700 OYASA	VGSi and descent angles not coincident (VGSi Angle 3.00/TCH 25).			
	OYASA 4 NM Holding Pattern			
PUCOY 2.1 NM to NOTIE	SEBEE	VUPUY	OYASA	4 NM Holding Pattern
NOTIE	1140	2400	2900	3700
	0.5	2.1 NM	3.8 NM	3 NM
CATEGORY	A	B	C	D
LNAV MDA	700-1 404 (500-1)		700-1½ 404 (500-1½)	
CIRCLING	840-1 543 (600-1)		840-1½ 543 (600-1½)	860-2 563 (600-2)

AK, 26 DEC 2024 to 20 FEB 2025

AK, 26 DEC 2024 to 20 FEB 2025