

NDB FMZ 392	APP CRS 005°	Rwy Idg 4317 TDZE 1636 Apt Elev 1636
-----------------------	------------------------	---

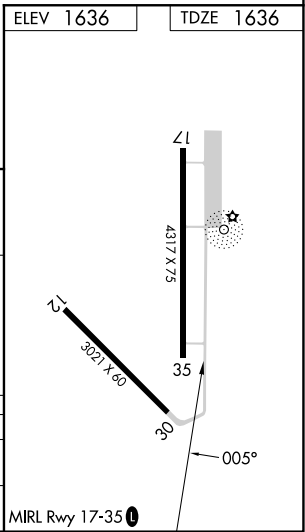
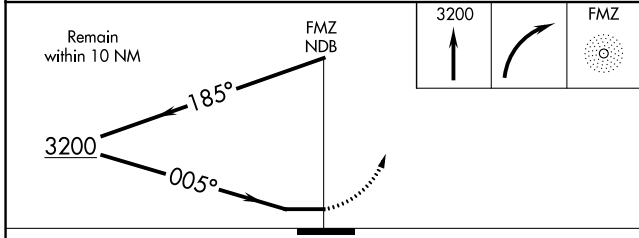
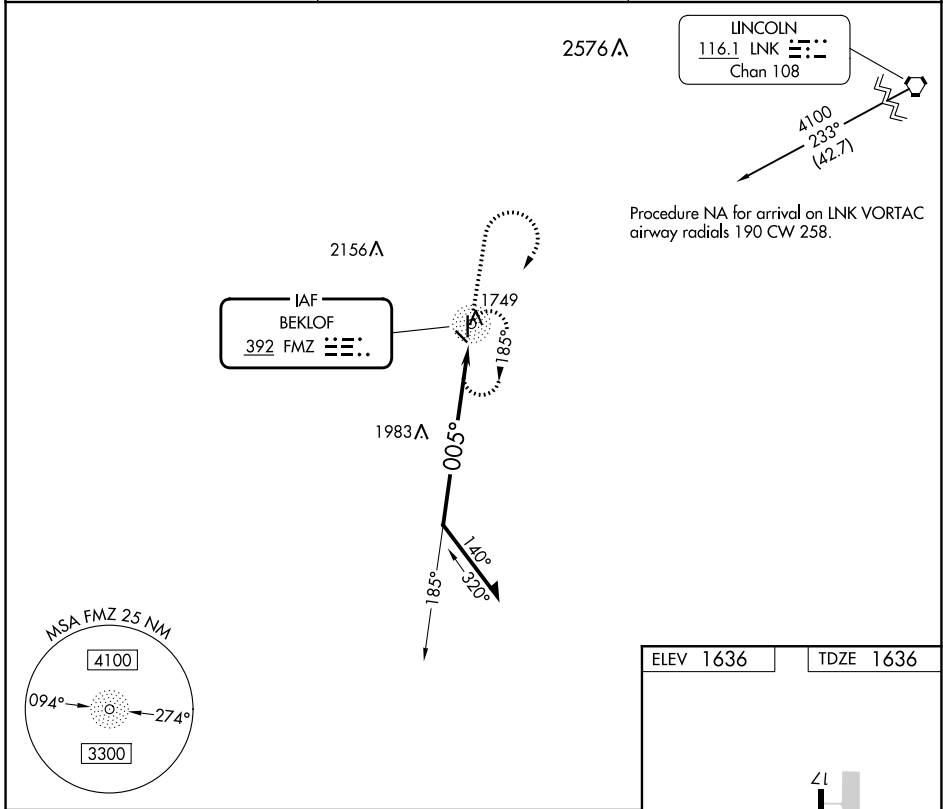
NDB RWY 35

FAIRMONT STATE (F'MZ)

⚠ Circling Rwy 12, 30 NA at night.
⚠ NA Use York altimeter setting: when not received, use Hebron altimeter setting and increase all MDAs 40 feet.

MISSED APPROACH: Climb to 3200 then right turn direct FMZ NDB and hold.

JYR AWOS-3 124.175	MINNEAPOLIS CENTER 119.4 278.8	CTAF 122.9
------------------------------	--	----------------------



CATEGORY	A	B	C	D
S-35	2420-1 784 (800-1)	2420-1¼ 784 (800-1¼)	NA	
C CIRCLING	2420-1 784 (800-1)	2420-1¼ 784 (800-1¼)	NA	

NC-2, 26 DEC 2024 to 23 JAN 2025

NC-2, 26 DEC 2024 to 23 JAN 2025