

APP CRS <b>175°</b>	Rwy Idg TDZE Apt Elev	<b>N/A</b> <b>N/A</b> <b>2470</b>
------------------------	-----------------------------	---

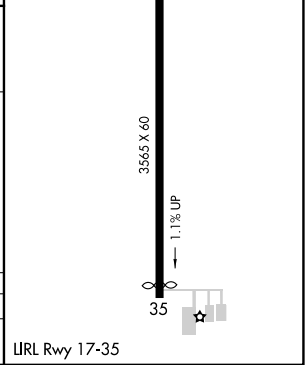
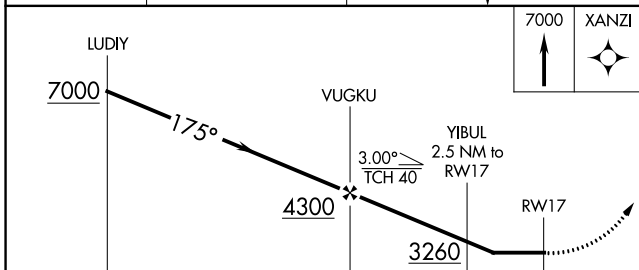
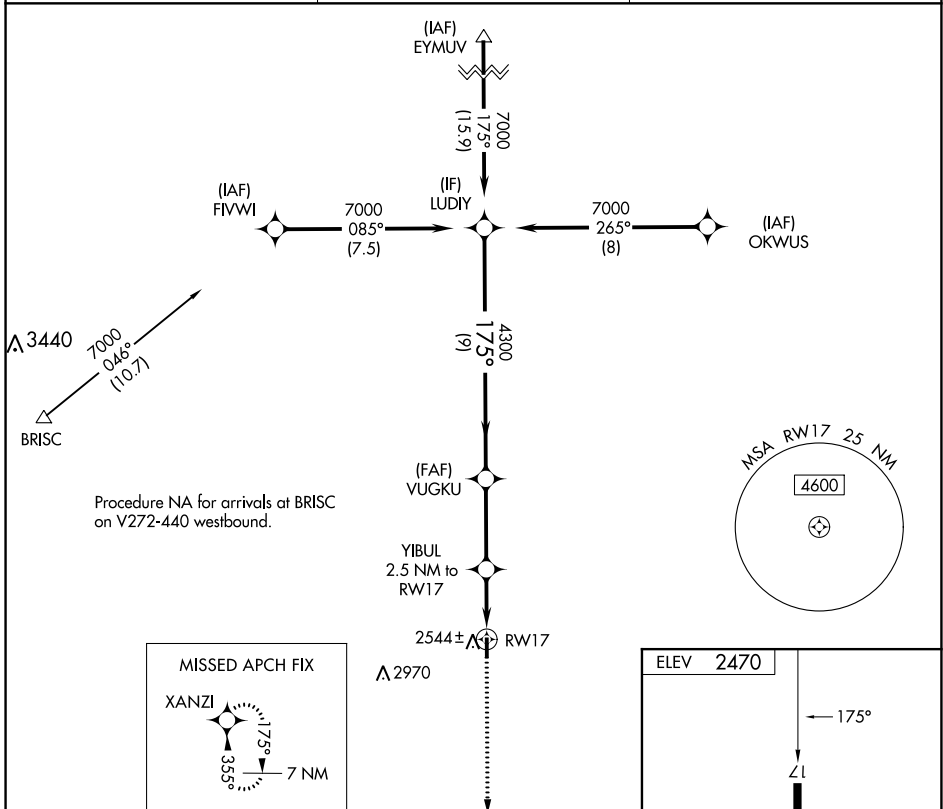
# RNAV (GPS)-A

WHEELER MUNI (T59)

**▼** Helicopter visibility reduction below 3/4 SM NA. DME/DME RNP-0.3 NA.  
**▲ NA** Use Hemphill County altimeter setting.

**MISSED APPROACH:** Climb to 7000 direct XANZI and hold, continue climb-in-hold to 7000.

HHF AWOS-3 <b>119.025</b>	ALBUQUERQUE CENTER <b>127.85 285.475</b>	CTAF <b>122.9</b>
------------------------------	---	----------------------



CATEGORY	A	B	C	D
<b>CIRCLING</b>	2980-1 510 (600-1)	3000-1 530 (600-1)	3020-1½ 550 (600-1½)	NA

URL Rwy 17-35

SC-2, 26 DEC 2024 to 23 JAN 2025

SC-2, 26 DEC 2024 to 23 JAN 2025