

WAAS CH <b>42502</b> <b>W34A</b>	APP CRS <b>343°</b>	Rwy Idg <b>4601</b> TDZE <b>16</b> Apt Elev <b>16</b>
--	------------------------	---

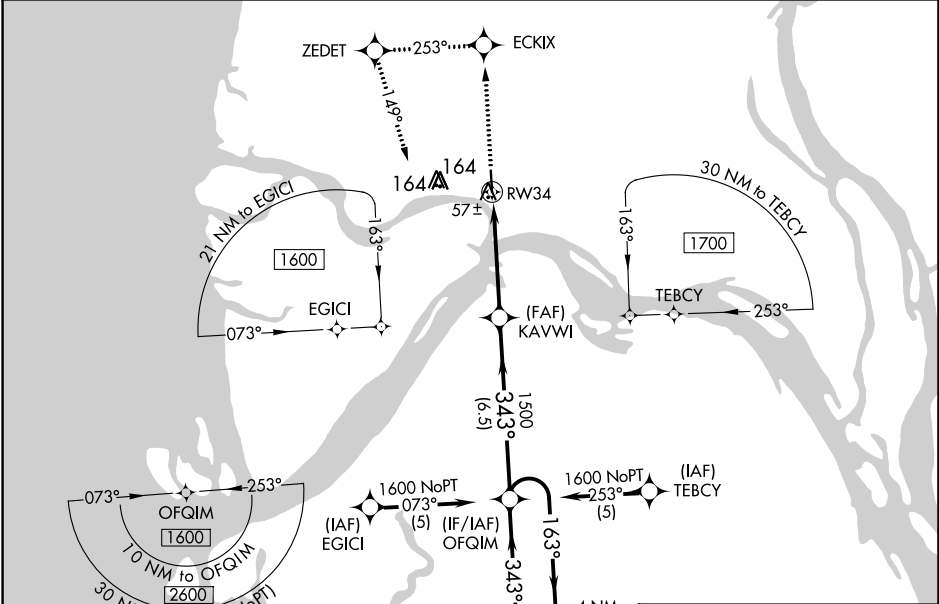
# RNAV (GPS) RWY 34

EMMONAK (ENM) (PAEM)

**▼** If local altimeter setting not received, use St Mary's altimeter setting and increase all DAs 168 feet and MDAs 180 feet. VDP NA with St Mary's altimeter setting. DME/DME RNP- 0.3 NA. Baro-VNAV NA when using St Mary's altimeter setting. For uncompensated Baro-VNAV systems, LNAV/VNAV NA below -25°C (-13°F) or above 48°C (119°F).

**MISSED APPROACH:** Climb to 1600 direct ECKIX and left turn via 253° track to ZEDET and left turn via 149° track to OFQIM and hold.

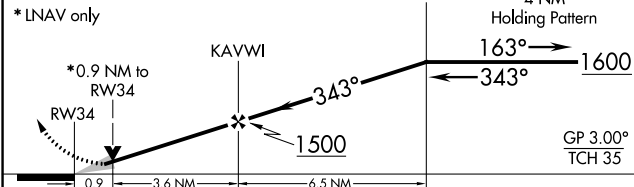
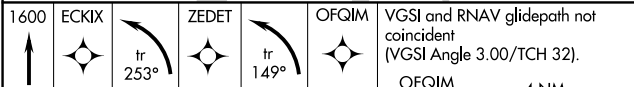
AWOS-3P <b>135.35</b>	ANCHORAGE CENTER <b>124.0</b>	CTAF <b>122.9</b>
--------------------------	----------------------------------	----------------------



AK, 26 DEC 2024 to 20 FEB 2025

AK, 26 DEC 2024 to 20 FEB 2025

ELEV 16	TDZE 16
---------	---------



CATEGORY	A	B	C	D
LPV DA		266-1	250 (300-1)	
LNAV/ VNAV DA		320-1	304 (400-1)	
LNAV MDA		320-1	304 (400-1)	
CIRCLING	520-1	504 (600-1)	520-1½ 504 (600-1½)	580-2 564 (600-2)

