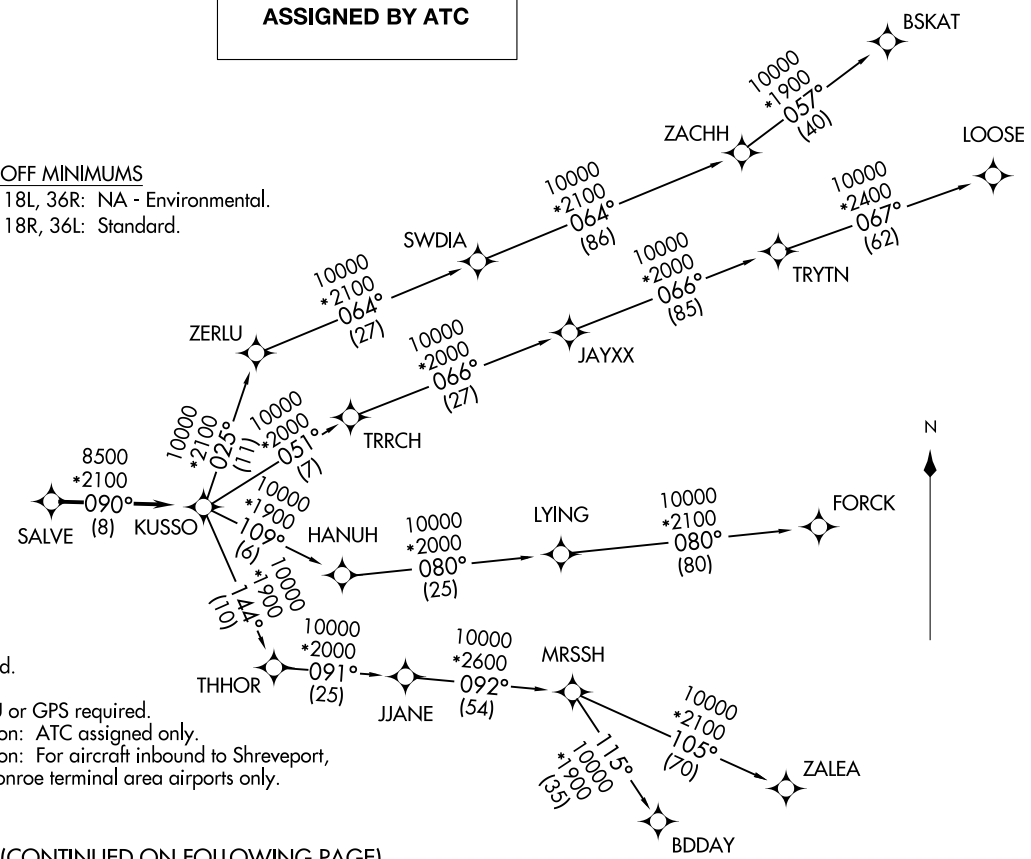
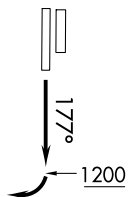


**TOP ALTITUDE:
ASSIGNED BY ATC**

LONE STAR DEP CON
135.975 379.9
ATIS
120.025
GND CON
119.475
SPINKS TOWER ★
124.625 (CTAF)

TAKEOFF MINIMUMS
Rwys 18L, 36R: NA - Environmental.
Rwys 18R, 36L: Standard.



- NOTE: RADAR required.
- NOTE: RNAV 1.
- NOTE: DME/DME/IRU or GPS required.
- NOTE: BDDAY Transition: ATC assigned only.
- NOTE: MRSSH Transition: For aircraft inbound to Shreveport, Jackson and Monroe terminal area airports only.

(CONTINUED ON FOLLOWING PAGE)

NOTE: Chart not to scale.

KUSSO ONE DEPARTURE (RNAV)
(KUSSO1 .KUSSO) 24MAR22

FORT WORTH, TEXAS
FORT WORTH SPINKS (FWS)

(KUSSO1 .KUSSO) 24305
KUSSO ONE DEPARTURE (RNAV)

FORT WORTH SPINKS (FWS)
FORT WORTH, TEXAS

AL-6917 (FAA)

KUSSO ONE DEPARTURE (RNAV)



DEPARTURE ROUTE DESCRIPTION

TAKEOFF RUNWAY 18R: Climb on heading 177° to 1200 before turning right.

When entering controlled airspace, fly heading assigned by ATC, expect vector to SALVE, then on track 090° to KUSSO, then on assigned transition. Maintain ATC assigned altitude, expect filed altitude 10 minutes after departure.

- BDDAY TRANSITION (KUSSO1.BDDAY)
- BSKAT TRANSITION (KUSSO1.BSKAT)
- FORCK TRANSITION (KUSSO1.FORCK)
- LOOSE TRANSITION (KUSSO1.LOOSE)
- MRSSH TRANSITION (KUSSO1.MRSSH)
- ZALEA TRANSITION (KUSSO1.ZALEA)

SC-2, 26 DEC 2024 to 23 JAN 2025

SC-2, 26 DEC 2024 to 23 JAN 2025