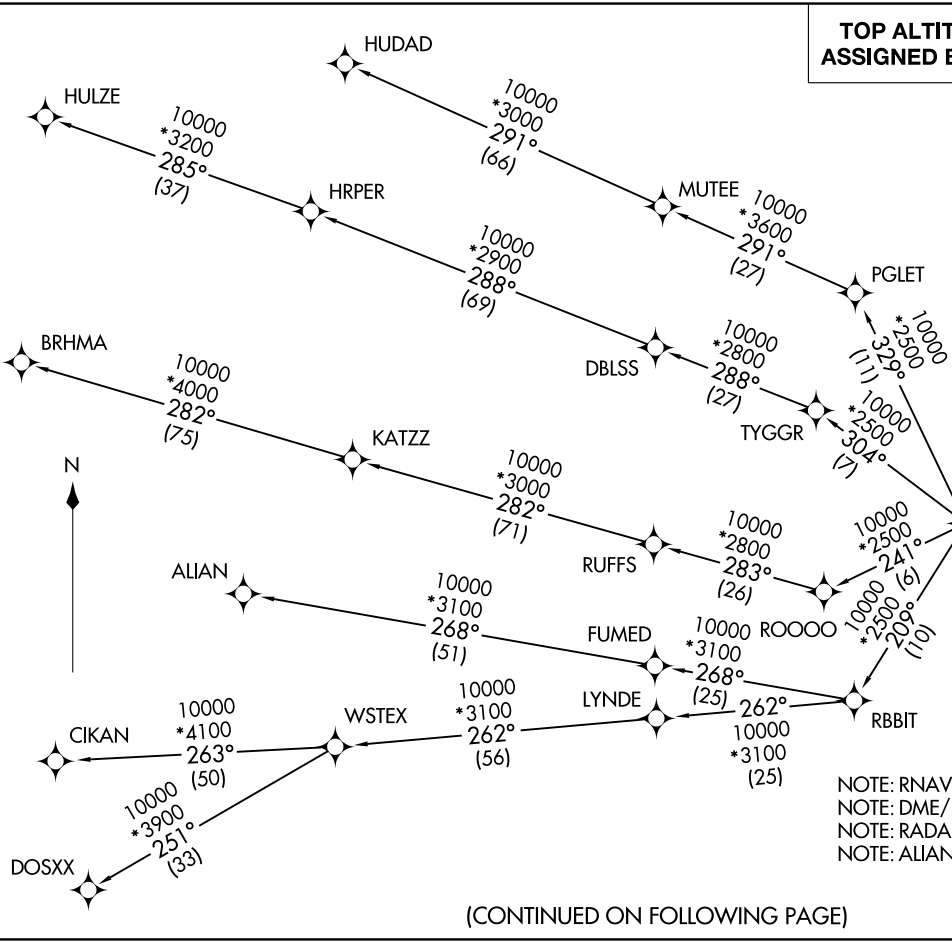


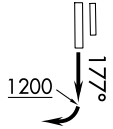
LONE STAR DEP CON
 135.975 379.9
 ATIS
 120.025
 GND CON
 119.475
 SPINKS TOWER ★
 124.625 (CTAF)

TAKEOFF MINIMUMS
 RwyS 18L, 36R: NA-Environmental.
 RwyS 18R, 36L: Standard.

**TOP ALTITUDE:
 ASSIGNED BY ATC**



NOTE: RNAV 1.
 NOTE: DME/DME/IRU or GPS required.
 NOTE: RADAR required.
 NOTE: ALIAN Transition: ATC assigned only.



(CONTINUED ON FOLLOWING PAGE)

NOTE: Chart not to scale.

SWABR ONE DEPARTURE (RNAV)



DEPARTURE ROUTE DESCRIPTION

TAKEOFF RUNWAY 18R: Climb on heading 177° to 1 200 before turning right.

When entering controlled airspace, fly heading assigned by ATC, expect vectors to BOTCH, then on track 270° to SWABR, then on assigned transition. Maintain ATC assigned altitude, expect filed altitude 10 minutes after departure.

ALIAN TRANSITION (SWABR1.ALIAN)

BRHMA TRANSITION (SWABR1.BRHMA)

CIKAN TRANSITION (SWABR1.CIKAN)

DOSXX TRANSITION (SWABR1.DOSXX)

HUDAD TRANSITION (SWABR1.HUDAD)

HULZE TRANSITION (SWABR1.HULZE)

WSTEX TRANSITION (SWABR1.WSTEX)

SC-2, 26 DEC 2024 to 23 JAN 2025

SC-2, 26 DEC 2024 to 23 JAN 2025