

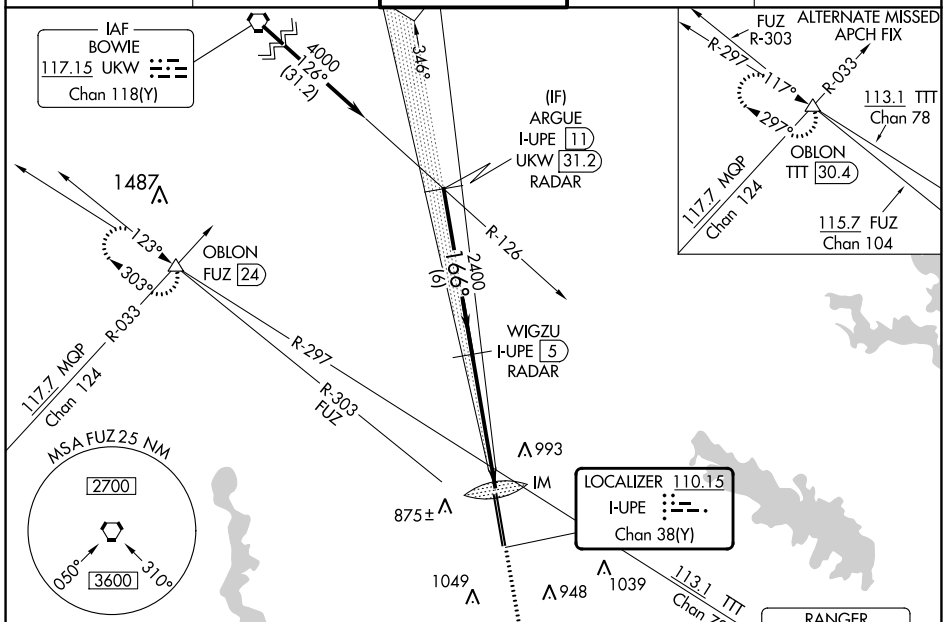
LOC/DME I-UIPE 110.15 Chan 38 (Y)	APP CRS 166°	Rwy Idg 16L 16R	10600 10410
		TDZE 723	721
		Apt Elev 723	723

ILS or LOC RWY 16L

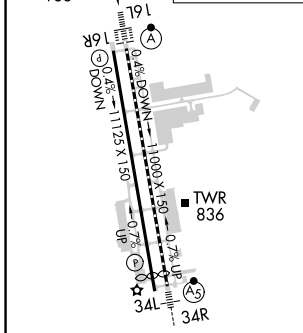
PEROT FLD/FORT WORTH ALLIANCE (A.F.W)

DME or RADAR required.	ALSF-2	MISSED APPROACH: Climb to 1200 then climbing right turn to 3000 on heading 330° and FUZ VORTAC R-303 to OBLON INT/FUZ 24 DME and hold.
------------------------	--------	--

ATIS 126.925	LONE STAR APP CON 118.1 306.95	ALLIANCE TOWER 135.15 257.9	GND CON 132.65 306.2	CLNC DEL 128.725
------------------------	--	---------------------------------------	--------------------------------	----------------------------



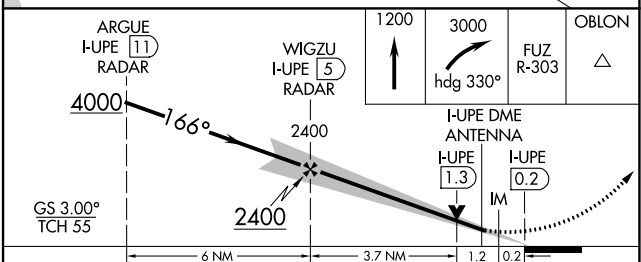
ELEV 723	D TDZE 16L 723
	TDZE 16R 721



TDZ/CL Rwy 16L and 34R
HIRL Rwy 16L-34R and 16R-34L
REIL Rwy 16R and 34L

FAF to MAP 5.1 NM

Knots	60	90	120	150	180
Min:Sec	5:06	3:24	2:33	2:02	1:42



CATEGORY	A	B	C	D	E
S-ILS 16L	923/18 200 (200-½)				
S-LOC 16L	1220/24	497 (500-½)	1220/50	497 (500-1)	
SIDESTEP 16R	1240-1	519 (600-1)	1240-1½ 519 (600-1½)	1240-2	519 (600-2)
CIRCLING	1240-1 517 (600-1)	1320-1 597 (600-1)	1360-1¾ 637 (700-1¾)	1360-2 637 (700-2)	1380-2¼ 657 (700-2¼)

ILS or LOC RWY 16L

SC-2, 26 DEC 2024 to 23 JAN 2025

SC-2, 26 DEC 2024 to 23 JAN 2025