

WAAS CH 45922 W18A	APP CRS 175°	Rwy Idg TDZE Apt Elev	4001 532 532
--	------------------------	-----------------------------	---

RNAV (GPS) RWY 18

LOCKHART MUNI (50R)

RNP APCH.

▽ Baro-VNAV NA. Use San Marcos altimeter setting, when not received,
△ NA use Austin-Bergstrom Intl altimeter setting and increase all DA 16 feet,
 all MDA 20 feet; increase LNAV Cat B visibility ¼ SM.

MISSED APPROACH: Climb to 4000
 direct EDIVE and on track 095° to
 SEEDS and hold.

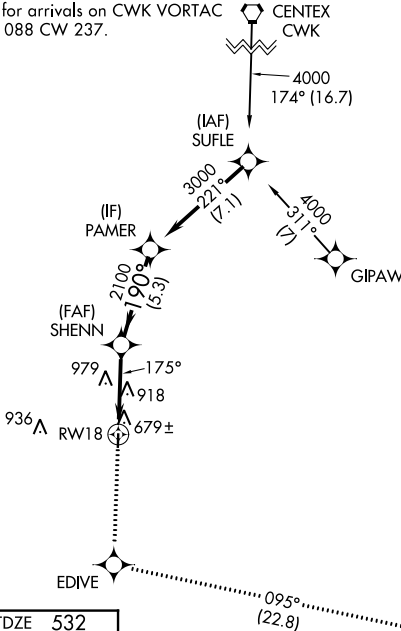
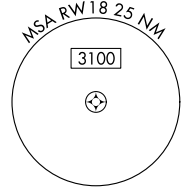
AUSTIN APP CON
120.875 270.25

UNICOM
122.8 (CTAF) 0

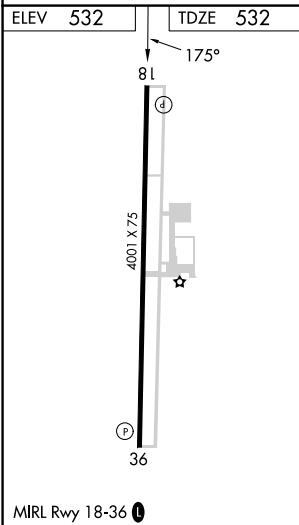
Procedure NA for arrivals on CWK VORTAC
 airway radials 088 CW 237.

CENTEX
 CWK

A1615



Procedure NA for arrivals at SEEDS
 on T256 eastbound.



4000	EDIVE	tr 095°	SEEDS	VGSI and RNAV glidepath not coincident (VGSI Angle 3.50/TCH 24).
↑	✧		✧	
SHENN 2100		PAMER 3000		
RW18 175°		190°		GP 3.00° TCH 40
4.8 NM		5.3 NM		
CATEGORY	A	B	C	D
LPV DA	815-1 283 (300-1)			NA
LNAV/VNAV DA	883-1¼ 351 (400-1¼)			NA
LNAV MDA	1260-1 728 (800-1)		1260-2 728 (800-2)	NA

SC-3, 26 DEC 2024 to 23 JAN 2025

SC-3, 26 DEC 2024 to 23 JAN 2025