

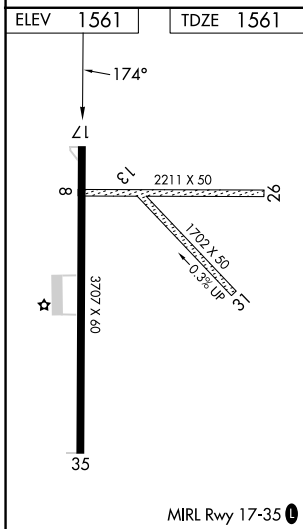
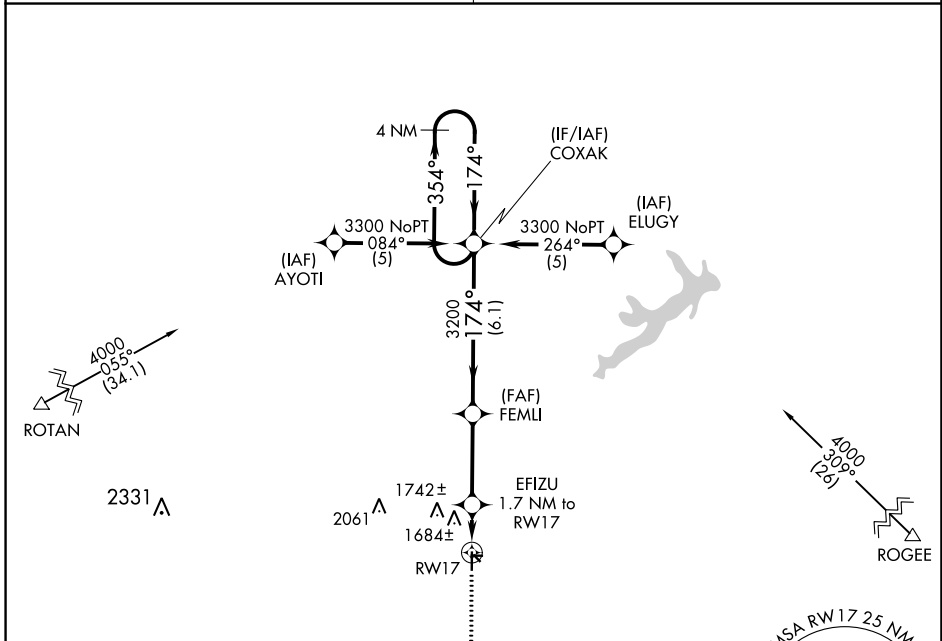
APP CRS	Rwy Idg	<b>3707</b>
<b>174°</b>	TDZE	<b>1561</b>
	Apt Elev	<b>1561</b>

# RNAV (GPS) RWY 17

ARLEDGE FLD (F56)

RNP APCH-GPS.	<p>Procedure NA at night. Use Abilene Rgnl altimeter setting; when not received use Breckenridge altimeter setting and increase all MDAs 40 feet. Rwy 17 helicopter visibility reduction below</p> <p>NA 1 SM NA. Circling NA to Rwy 8/26 and 13/31.</p>	<p>MISSED APPROACH: Climb to 3300 direct HINTA and hold.</p>
---------------	--	--

<p>ABILENE APP CON</p> <p><b>127.2 282.3</b></p>	<p>UNICOM</p> <p><b>122.8 (CTAF) 0</b></p>
--	--



ELEV	1561	TDZE	1561
<p>MIRL Rwy 17-35</p>			
3300	HINTA	FEMLI	COXAK
↑	✧		4 NM Holding Pattern
EFIZU			3300
1.7 NM to RWY 17			354° →
			← 174°
RWY 17	2120	3200	
	1.7 NM	3.3 NM	6.1 NM
CATEGORY	A	B	C
LNAV MDA	2040-1	479 (500-1)	2040-1 <sup>3</sup> / <sub>8</sub> 479 (500-1 <sup>3</sup> / <sub>8</sub> )
CIRCLING	2100-1 539 (600-1)	2200-1 639 (700-1)	2220-1 <sup>3</sup> / <sub>4</sub> 659 (700-1 <sup>3</sup> / <sub>4</sub> )
			NA

SC-2, 26 DEC 2024 to 23 JAN 2025

SC-2, 26 DEC 2024 to 23 JAN 2025