

|  |                        |   |
|--|------------------------|---|
| WAAS<br>CH <b>50340</b><br><b>W31A</b> | APP CRS<br><b>309°</b> | Rwy Idg <b>3700</b><br>TDZE <b>79</b><br>Apt Elev <b>80</b> |
|--|------------------------|---|

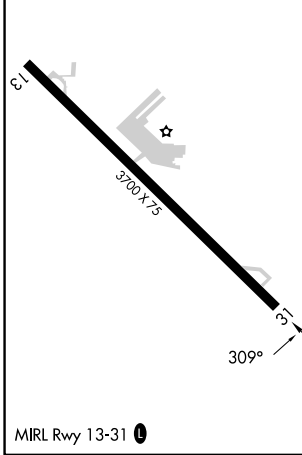
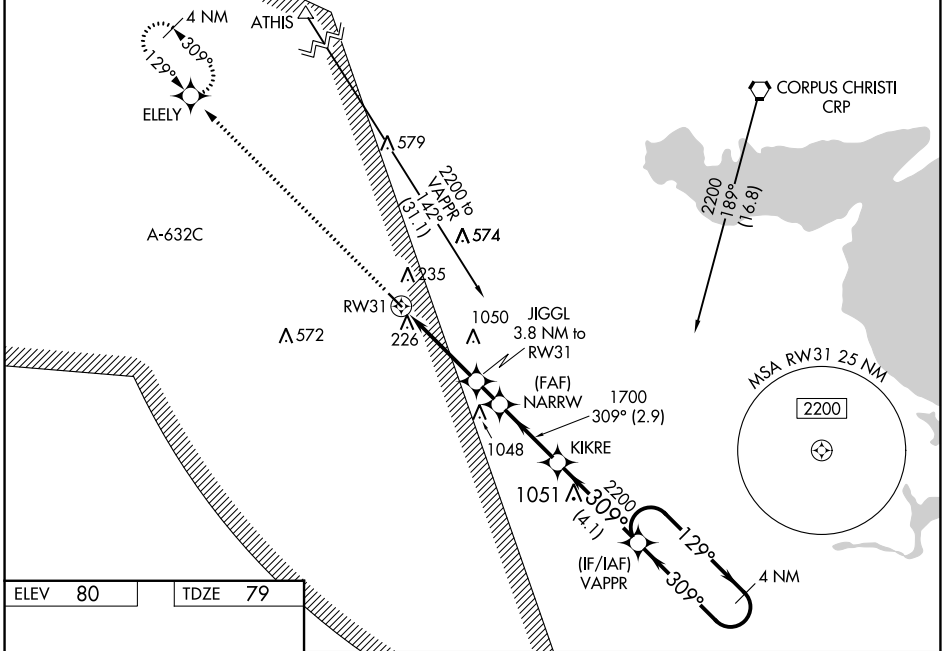
# RNAV (GPS) RWY 31

NUECES COUNTY (R.B.O)

**⚠** For uncompensated Baro-VNAV systems, LNAV/VNAV NA below -15°C (5°F) or above 54°C (130°F). Circling NA northeast of Rwy 13-31. Baro-VNAV and VDP NA when using Corpus Christi Intl altimeter setting. Rwy 31 helicopter visibility reduction below 3/4 SM NA. DME/DME RNP-0.3 NA. Procedure NA at night. When local altimeter not received, use Corpus Christi Intl altimeter setting and increase LPV DA to 357 feet, LNAV/VNAV DA to 398 feet and all MDA 40 feet, increase LNAV/VNAV all Cats visibility 1/8 SM.

MISSED APPROACH: Climb to 2000 direct ELEY and hold.

|                          |   |                      |                       |
|--------------------------|---|----------------------|-----------------------|
| AWOS-3<br><b>118.175</b> | KINGSVILLE APP CON *<br><b>119.9 290.45</b> | CTAF<br><b>122.9</b> | <b>122.8</b> <b>0</b> |
|--------------------------|---|----------------------|-----------------------|



| 2000              | ELEY   | NARRW                | KIKRE  | VAPPR  | 4 NM Holding Pattern |
|-------------------|--------|----------------------|--------|--------|----------------------|
| *LNAV only.       |        | JIGGL 3.8 NM to RW31 | 1700   | 309°   | 129° → 2200          |
| *1.1 NM to RW31   |        | 1320*                | 1700   | ← 309° | GP 3.00° TCH 40      |
| 1.1 NM            | 2.7 NM | 1.2 NM               | 2.9 NM | 4.1 NM |                      |
| CATEGORY          | A      | B                    | C      | D      |                      |
| LPV DA            | 329-1  | 250 (300-1)          |        |        | NA                   |
| LNAV/VNAV DA      | 370-1  | 291 (300-1)          |        |        | NA                   |
| LNAV MDA          | 480-1  | 401 (400-1)          |        |        | NA                   |
| <b>C</b> CIRCLING | 540-1  | 460 (500-1)          |        |        | NA                   |

SC-3, 26 DEC 2024 to 23 JAN 2025

SC-3, 26 DEC 2024 to 23 JAN 2025