

VORTAC CRP 115.5 Chan 102	APP CRS 051°	Rwy Idg TDZE Apt Elev N/A N/A 80
---	------------------------	--

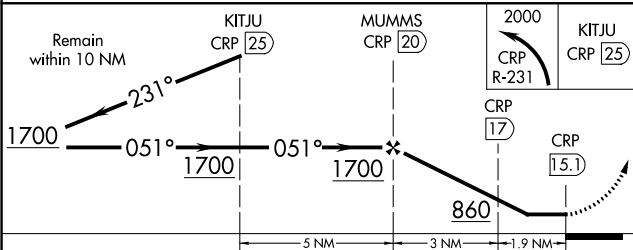
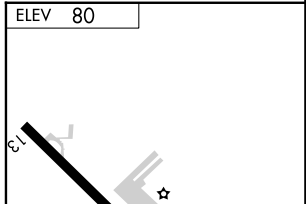
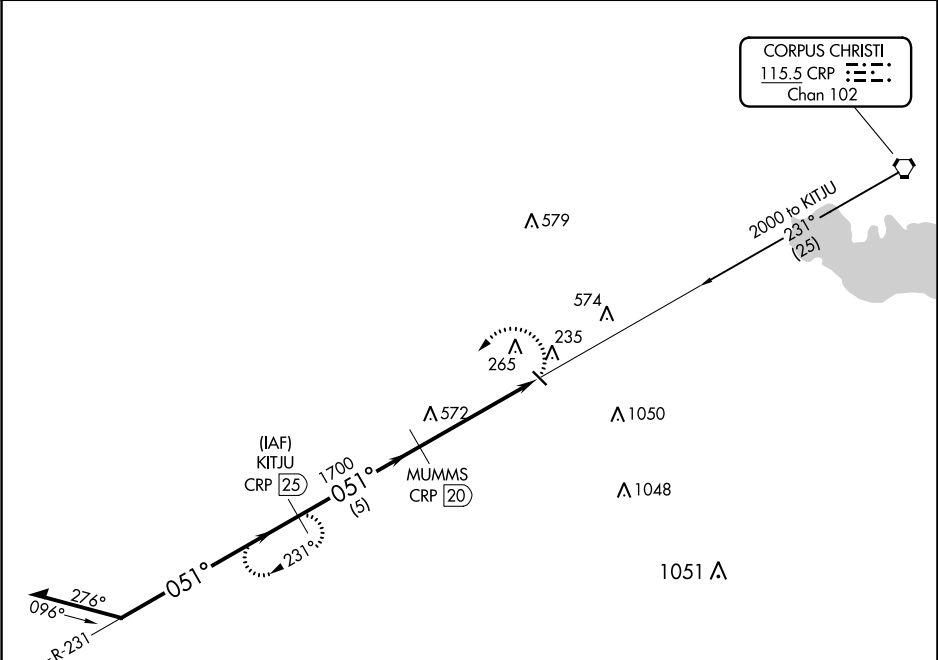
VOR/DME-A

NUECES COUNTY (RBO)

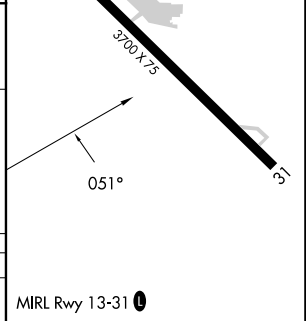
NA When local altimeter setting not received, use Corpus Christi Intl altimeter setting. Circling not authorized northeast of Rwy 13-31.

MISSED APPROACH: Climbing left turn to 2000 via CRP R-231 to KITJU/CRP 25 DME and hold.

AWOS-3 118.175	KINGSVILLE APP CON ★ 119.9 290.45	CTAF 122.9	122.8 0
--------------------------	---	----------------------	-----------------------



CATEGORY	A	B	C	D
CRCLING	660-1	580 (600-1)	NA	NA



SC-3, 26 DEC 2024 to 23 JAN 2025

SC-3, 26 DEC 2024 to 23 JAN 2025