

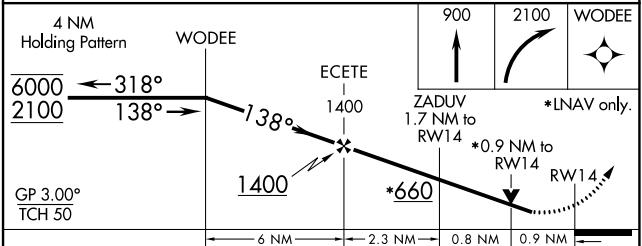
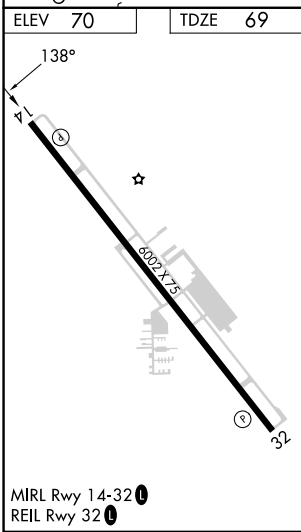
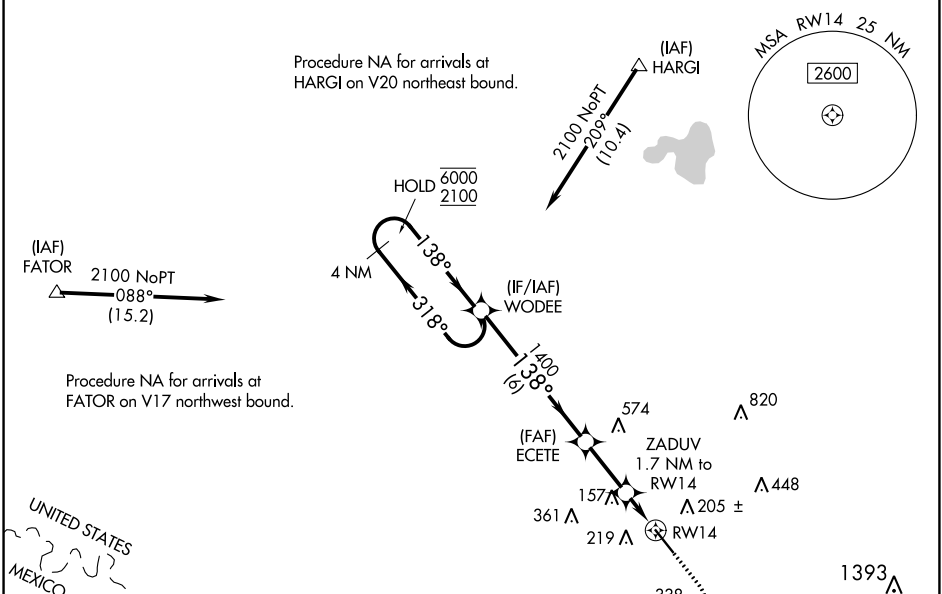
WAAS CH 70341 W14A	APP CRS 138°	Rwy Idg TDZE Apt Elev	6002 69 70
--	------------------------	-----------------------------	---------------------------------------

RNAV (GPS) RWY 14

MID VALLEY (TXW)

RNP APCH.	MISSED APPROACH: Climb to 900 then climbing right turn to 2100 direct WODEE and hold.		
<p>▼ Rwy 14 helicopter visibility reduction below 3/4 SM NA. ▲ For uncompensated Baro-VNAV systems, LNAV/VNAV NA below -15°C or above 54°C.</p>			

AWOS-3PT 118.575	VALLEY APP CON 126.55 377.2	CLNC DEL 125.95	UNICOM 122.8 (CTAF)
----------------------------	---------------------------------------	---------------------------	-------------------------------



CATEGORY	A	B	C	D
LPV DA		319-3/4	250 (300-3/4)	
LNAV/VNAV DA		331-7/8	262 (300-7/8)	
LNAV MDA		420-1	351 (400-1)	
<input checked="" type="checkbox"/> CIRCLING	620-1	550 (600-1)	700-1 3/4 630 (700-1 3/4)	940-2 3/4 870 (900-2 3/4)

SC-3, 26 DEC 2024 to 23 JAN 2025

SC-3, 26 DEC 2024 to 23 JAN 2025