

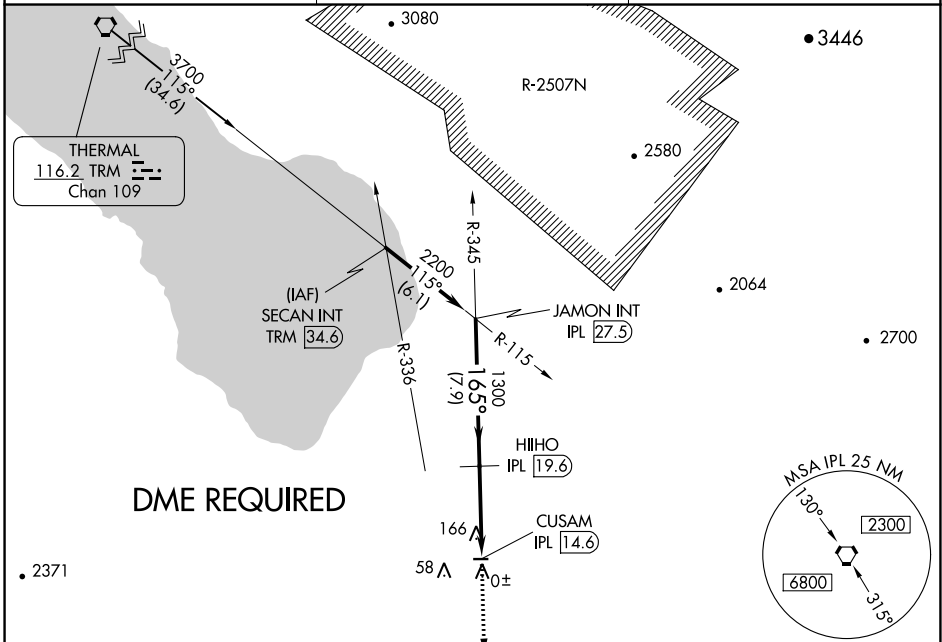
VORTAC IPL 115.9 Chan 106	APP CRS 165°	Rwy Idg TDZE Apt Elev	N/A N/A -129
---	------------------------	-----------------------------	---

VOR-B
BRAWLEY MUNI (BWC)

▼ Use Imperial County altimeter setting.
▲ NA DME Required.
▲ NA Circling Rwy 8 NA at night.

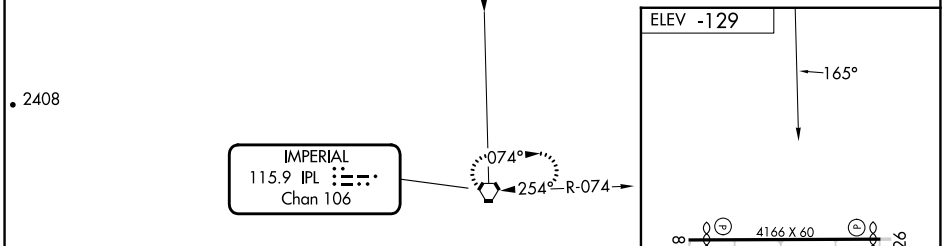
MISSED APPROACH: Climb to 3000 direct IPL VORTAC and hold.

IPL ASOS 132.175	YUMA CERAP 128.55 292.2	CTAF 122.9
----------------------------	-----------------------------------	----------------------



SW-3, 26 DEC 2024 to 23 JAN 2025

SW-3, 26 DEC 2024 to 23 JAN 2025



CATEGORY	A		B		C		D	
	560-1		689 (700-1)		NA		NA	

