

LOC I-UXL <b>109.3</b>	APP CRS <b>146°</b>	Rwy Idg <b>5001</b> TDZE <b>10</b> Apt Elev <b>10</b>
---------------------------	------------------------	---

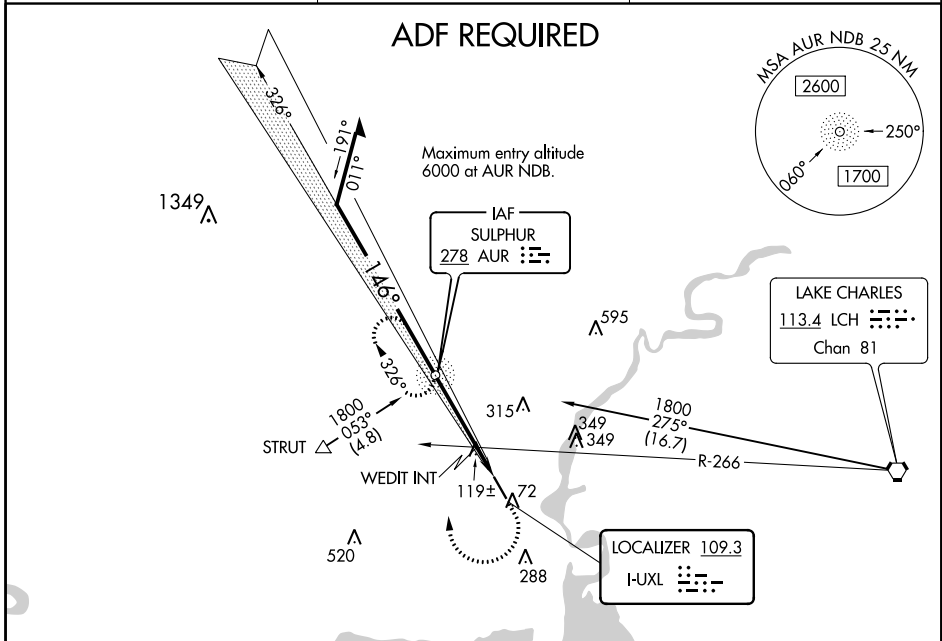
**LOC RWY 15**  
SOUTHLAND FLD (UXL)

**⚠** Inoperative table does not apply to S-15 Cat C. Visibility reduction by helicopters NA. When local altimeter setting not received, use Lake Charles Rgnl altimeter setting and increase all MDA 20 feet and Circling visibility Cat C/D ¼ SM.

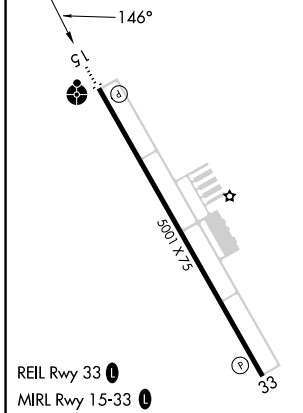
**ODALS**

**MISSED APPROACH:** Climb to 500 then climbing right turn to 2400 direct AUR NDB and hold, continue climb-in-hold to 2400.

AWOS-3PT <b>118.175</b>	LAKE CHARLES APP CON * <b>119.35 282.3</b>	UNICOM <b>122.8 (CTAF) 0</b>
----------------------------	---	---------------------------------



ELEV 10	TDZE 10
---------	---------

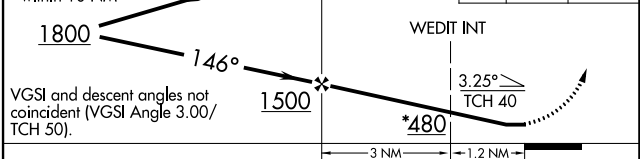


\* 500 when using Lake Charles Rgnl altimeter setting.

Remain within 10 NM

AUR NDB

500 2400 AUR



CATEGORY	A	B	C	D
S-15	480-¾	470 (500-¾)	480-1¼ 470 (500-1¼)	480-1½ 470 (500-1½)
CIRCLING	480-1 470 (500-1)	520-1 510 (600-1)	680-1¾ 670 (700-1¾)	680-2 670 (800-2)
WEDIT FIX MINIMUMS				
S-15	380-¾ 370 (400-¾)			380-1¼ 370 (400-1¼)
CIRCLING	420-1 410 (500-1)	520-1 510 (600-1)	680-1¾ 670 (700-1¾)	680-2 670 (700-2)

FAF to MAP 4.2 NM					
Knots	60	90	120	150	180
Min:Sec	4:12	2:48	2:06	1:41	1:24

SC-4, 26 DEC 2024 to 23 JAN 2025

SC-4, 26 DEC 2024 to 23 JAN 2025