

APP CRS	Rwy Idg	6101
181°	TDZE	5024
	Apt Elev	5024

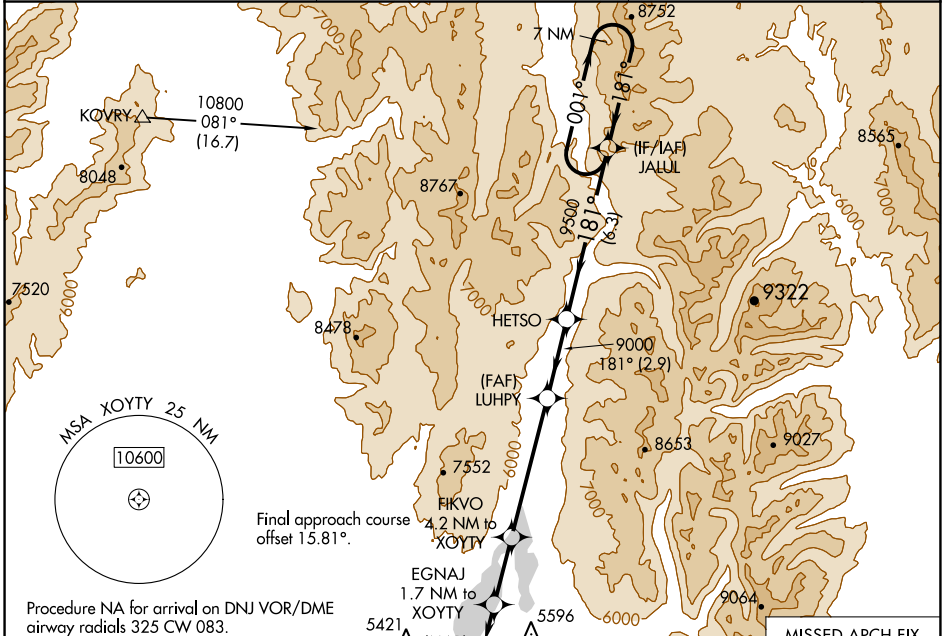
RNAV (GPS) RWY 16

MC CALL MUNI (MYL)

⚠ Rwy 16 helicopter visibility reduction below 1 SM NA.
⚠ DME/DME RNP-0.3 NA.
❄ -20°C Straight-in Rwy 16 NA at night, Circling Rwy 16 NA at night.

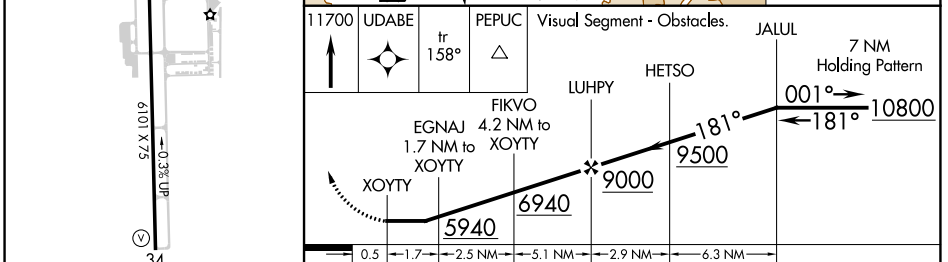
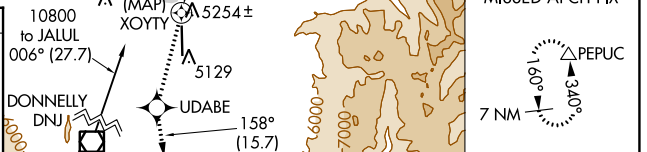
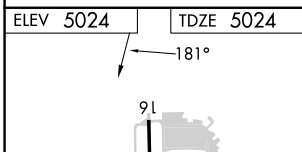
MISSED APPROACH: Climb to 11700 direct UDABE and on track 158° to PEPUC and hold, continue climb-in-hold to 11700.

ASOS 119.925	SALT LAKE CENTER 128.05 306.95	UNICOM 122.8 (CTAF) 📻
------------------------	--	--



NW-1, 26 DEC 2024 to 23 JAN 2025

NW-1, 26 DEC 2024 to 23 JAN 2025



	A	B	C	D
CATEGORY	A	B	C	D
LNAV MDA	5520-1	496 (500-1)	5520-1 $\frac{3}{8}$ 496 (500-1 $\frac{3}{8}$)	NA
C CIRCLING	5940-1 $\frac{1}{4}$	916 (1000-1 $\frac{1}{4}$)	6140-3 1116 (1200-3)	NA

MC CALL, IDAHO
 Amdt 1 12OCT17

44°53'N-116°06'W

MC CALL MUNI (MYL)
RNAV (GPS) RWY 16