

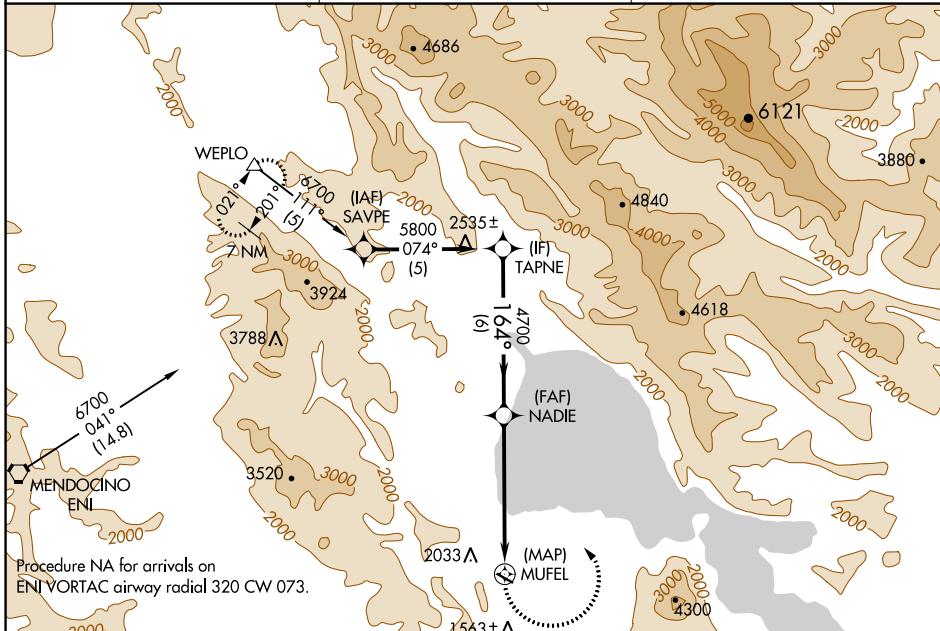
APP CRS 164°	Rwy Idg TDZE Apt Elev	N/A N/A 1380
------------------------	-----------------------------	---

RNAV (GPS)-A

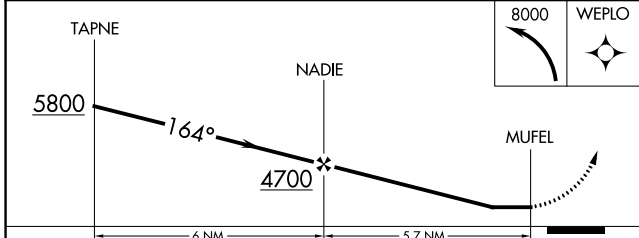
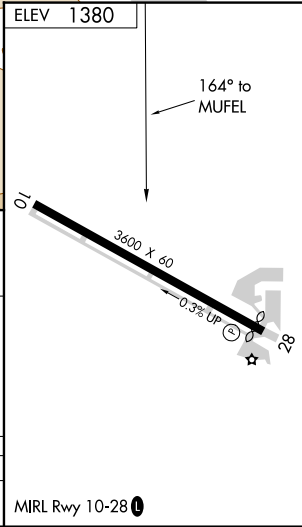
LAMPSON FLD (102)

<p>∇ ▲ NA</p>	<p>Circling NA south of Rwy 10-28. DME/DME RNP-0.3 NA. Procedure NA at night. When local altimeter setting not received, use Ukiah altimeter setting and increase all MDA 560 feet.</p>	<p>MISSED APPROACH: Climbing left turn to 8000 direct WEPLO and hold.</p>
---------------------------------	---	--

<p>AWOS-3 118.35</p>	<p>OAKLAND CENTER 127.8 353.5</p>	<p>UNICOM 122.8 (CTAF) 0</p>
---------------------------------	--	---



Procedure NA for arrivals on ENI VORTAC airway radial 320 CW 073.



CATEGORY	A	B	C	D
CIRCLING	2580-1¼ 1200 (1200-1¼)	2580-1½ 1200 (1200-1½)		NA

MIRL Rwy 10-28 0

SW-2, 26 DEC 2024 to 23 JAN 2025

SW-2, 26 DEC 2024 to 23 JAN 2025