

WAAS CH <b>40319</b> <b>W31A</b>	APP CRS <b>317°</b>	Rwy Idg TDZE <b>1140</b> Apt Elev <b>1140</b>	<b>4002</b>
--	------------------------	---	-------------

# RNAV (GPS) RWY 31

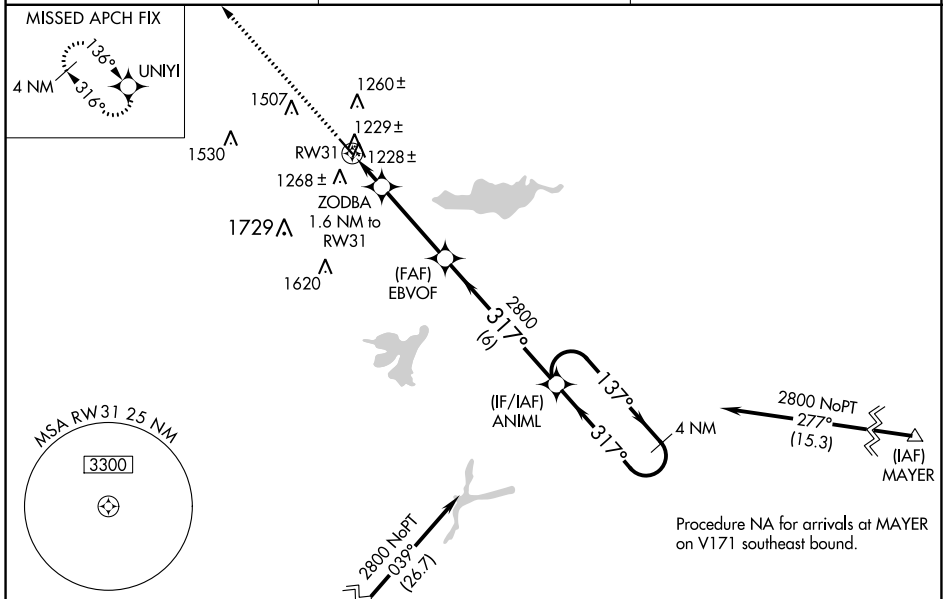
LITCHFIELD MUNI (LJF)

RNP APCH - GPS.

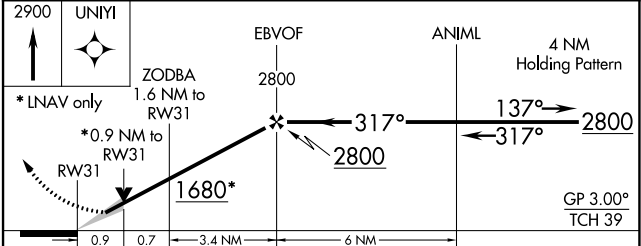
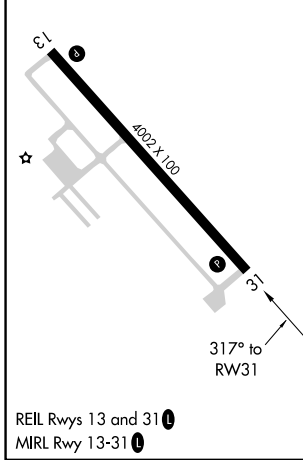
**⚠** Baro-VNAV NA when using Hutchinson altimeter setting. For uncompensated Baro-VNAV systems, LNAV/VNAV NA below -17°C or above 54°C. When Local altimeter setting not received, use Hutchinson altimeter setting: increase LPV DA to 1435 feet; increase LNAV/VNAV DA to 1594 feet; increase all MDA 60 feet and LNAV and Circling Cat C visibility ¼ SM. VDP NA with Hutchinson altimeter setting.

MISSED APPROACH:  
Climb to 2900 direct UN1YI and hold.

AWOS-3 <b>119.65</b>	MINNEAPOLIS CENTER <b>125.5 323.1</b>	CTAF <b>122.9 0</b>
-------------------------	--	------------------------



ELEV 1140	TDZE 1140
-----------	-----------



CATEGORY	A	B	C	D
LPV DA		1389-1	249 (300-1)	
LNAV/VNAV DA		1548-1½	408 (500-1½)	
LNAV MDA		1480-1	340 (400-1)	
CIRCLING	1600-1	460 (500-1)	1860-2 720 (800-2)	2080-3 940 (1000-3)

NC-1, 26 DEC 2024 to 23 JAN 2025

NC-1, 26 DEC 2024 to 23 JAN 2025