

WAAS CH 70616 W25A	APP CRS 249°	Rwy Idg TDZE Apt Elev	5500 689 689
--	------------------------	-----------------------------	---

RNAV (GPS) RWY 25

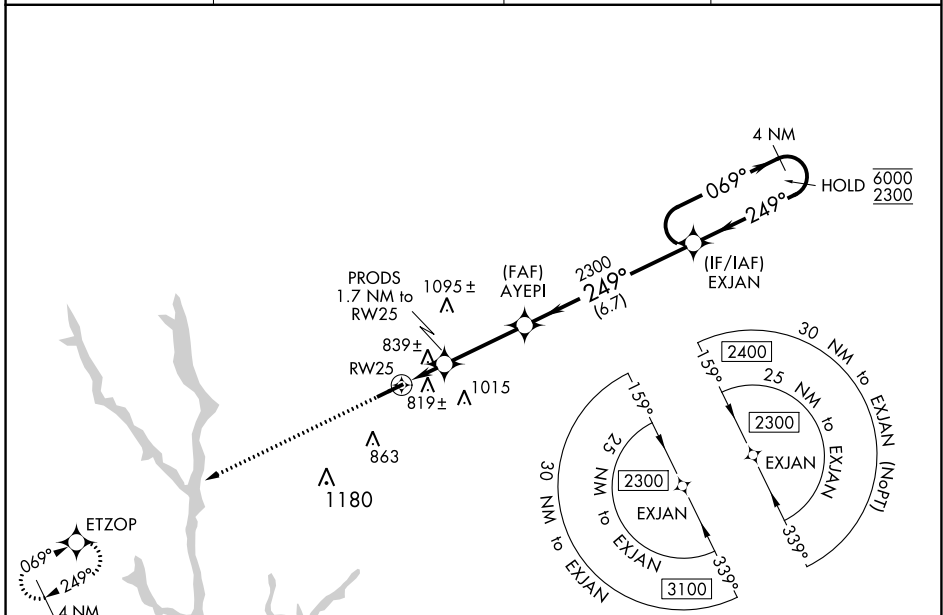
GREENE COUNTY RGNL (CPP)

RNP APCH - GPS.

▼ Rwy 25 helicopter visibility reduction below 3/4 SM NA.
 ▲ For uncompensated Baro-VNAV systems, LNAV/VNAV NA below -16°C or above 54°C.

MISSED APPROACH: Climb to 2300 direct ETZOP and hold.

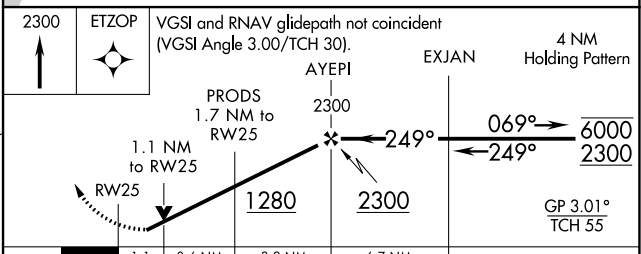
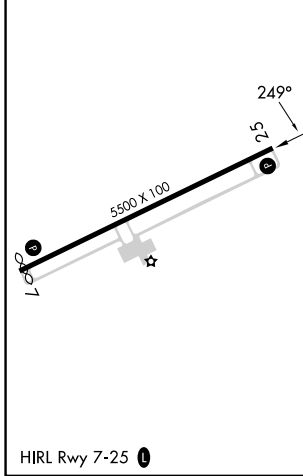
AWOS-3 124.525	ATLANTA APP CON * 132.475 291.1	GCO 121.725	UNICOM 122.8(CTAF)
--------------------------	---	-----------------------	------------------------------



SE-4, 26 DEC 2024 to 23 JAN 2025

SE-4, 26 DEC 2024 to 23 JAN 2025

ELEV 689	D	TDZE 689
----------	----------	----------



CATEGORY	A	B	C	D
LPV DA		981-7/8	292 (300-7/8)	
LNAV/VNAV DA		1065-1	376 (400-1)	
LNAV MDA	1080-1	391 (400-1)	1080-1 1/8	391 (400-1 1/8)
C CIRCLING	1140-1 451 (500-1)	1180-1 491 (500-1)	1320-1 3/4 631 (700-1 3/4)	1480-2 1/2 791 (800-2 1/2)