

| | | | |
|--|------------------------|-----------------------------|---|
| WAAS CH 69331 W12A | APP CRS 124° | Rwy Idg TDZE Apt Elev | 3601 1748 1748 |
|--|------------------------|-----------------------------|---|

RNAV (GPS) RWY 12

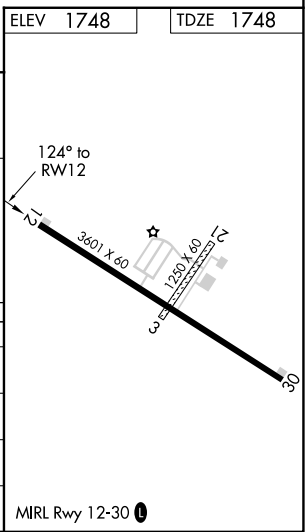
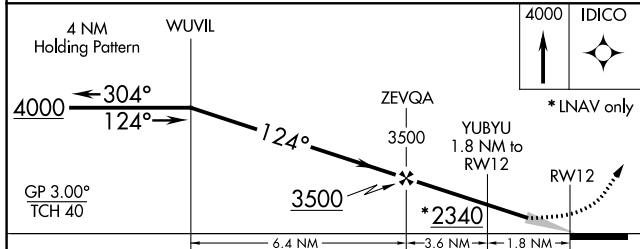
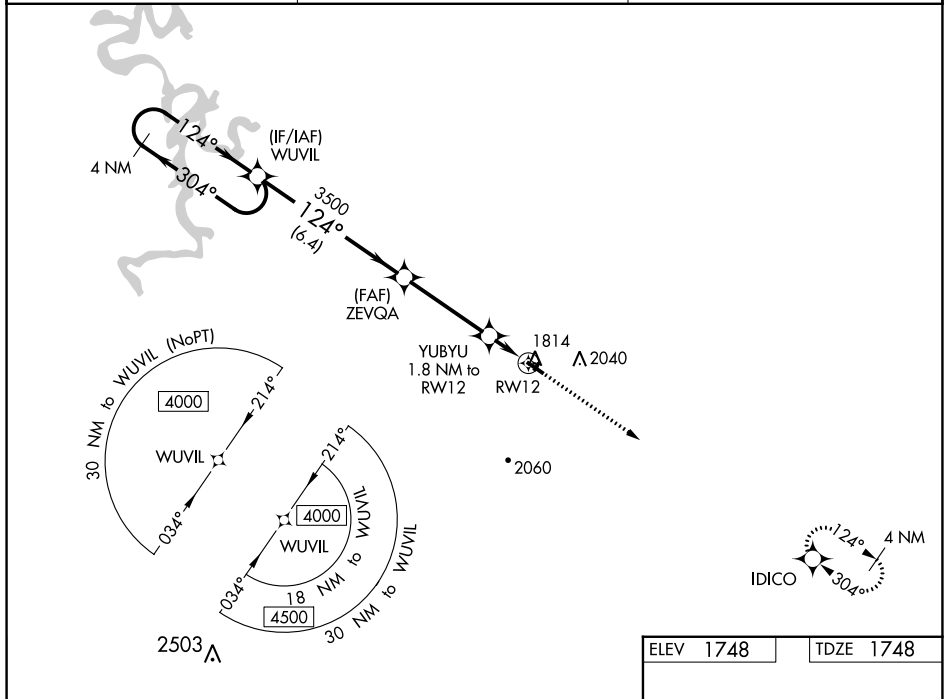
HUNTSVILLE MUNI (H34)

RNP APCH - GPS.

Baro-VNAV NA. Use Springdale altimeter setting; when not received, use Drake Fld altimeter setting and increase all DA 18 feet and all MDA 20 feet; increase LPV all Cats, LNAV/VNAV all Cats and LNAV Cat C visibilities ½ mile. Circling NA to Rwy's 3 and 21.

MISSED APPROACH: Climb to 4000 direct IDICO and hold.

| | | |
|------------------------------|---|---------------------------------|
| ASG AWOS-3 124.675 | RAZORBACK APP CON ★ 126.6 305.2 | UNICOM 122.8 (CTAF) 0 |
|------------------------------|---|---------------------------------|



| CATEGORY | A | B | C | D |
|--------------|-----------------------|-----------------------|-------------------------|----|
| LPV DA | 2097-1½ 349 (400-1½) | | | NA |
| LNAV/VNAV DA | 2097-1½ 349 (400-1½) | | | NA |
| LNAV MDA | 2180-1 | 432 (500-1) | 2180-1¼ 432 (500-1¼) | NA |
| CIRCLING | 2280-1 532 (600-1) | 2520-1 772 (800-1) | 2520-2¼ 772 (800-2¼) | NA |

SC-1, 26 DEC 2024 to 23 JAN 2025

SC-1, 26 DEC 2024 to 23 JAN 2025