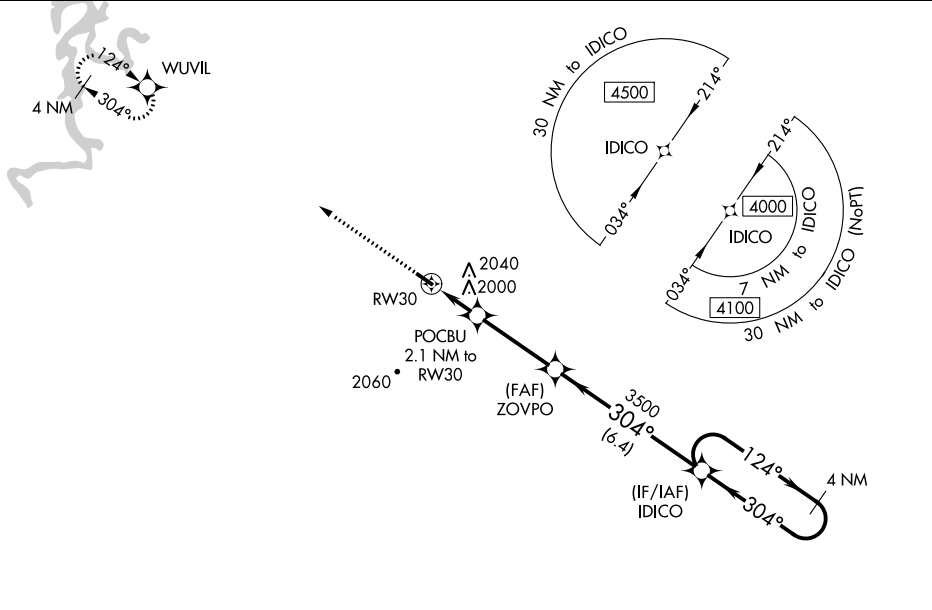


WAAS CH <b>40231</b> <b>W30A</b>	APP CRS <b>304°</b>	Rwy Idg TDZE Apt Elev	<b>3601</b> <b>1748</b> <b>1748</b>
--	------------------------	-----------------------------	---

# RNAV (GPS) RWY 30

HUNTSVILLE MUNI (H34)

RNP APCH - GPS.		MISSED APPROACH: Climb to 4000 direct WUVIL and hold.	
<p>▼ Baro-VNAV NA. Use Springdale altimeter setting; when not received, use Drake Fld altimeter setting and increase all DA 18 feet and all MDA 20 feet; increase LNAV/VNAV all Cats visibility ¼ mile. Circling NA to Rwys 3 and 21.</p> <p>▲ NA</p>	ASG AWOS-3 <b>124.675</b>	RAZORBACK APP CON * <b>126.6 305.2</b>	UNICOM <b>122.8 (CTAF) 0</b>



ELEV 1748	TDZE 1748	<p>▲ 2625</p> <p>4000 WUVIL</p> <p>*LNAV only</p> <p>ZOVPO 3500</p> <p>POCBU 2.1 NM to RW30</p> <p>RW30</p> <p>*2440</p> <p>3500</p> <p>IDICO 4 NM Holding Pattern</p> <p>124° → 4000</p> <p>← 304°</p> <p>GP 3.00° TCH 40</p> <p>← 2.1 NM → ← 3.3 NM → ← 6.4 NM →</p>																												
		<table border="1"> <thead> <tr> <th>CATEGORY</th> <th>A</th> <th>B</th> <th>C</th> <th>D</th> </tr> </thead> <tbody> <tr> <td>LPV DA</td> <td colspan="3">2047-1 299 (300-1)</td> <td>NA</td> </tr> <tr> <td>LNAV/VNAV DA</td> <td colspan="3">2410-2¼ 662 (700-2¼)</td> <td>NA</td> </tr> <tr> <td>LNAV MDA</td> <td>2360-1</td> <td>612 (700-1)</td> <td>2360-1¾ 612 (700-1¾)</td> <td>NA</td> </tr> <tr> <td><input checked="" type="checkbox"/> CIRCLING</td> <td>2360-1 612 (700-1)</td> <td>2520-1 772 (800-1)</td> <td>2520-2¼ 772 (800-2¼)</td> <td>NA</td> </tr> </tbody> </table>				CATEGORY	A	B	C	D	LPV DA	2047-1 299 (300-1)			NA	LNAV/VNAV DA	2410-2¼ 662 (700-2¼)			NA	LNAV MDA	2360-1	612 (700-1)	2360-1¾ 612 (700-1¾)	NA	<input checked="" type="checkbox"/> CIRCLING	2360-1 612 (700-1)	2520-1 772 (800-1)	2520-2¼ 772 (800-2¼)	NA
CATEGORY	A	B	C	D																										
LPV DA	2047-1 299 (300-1)			NA																										
LNAV/VNAV DA	2410-2¼ 662 (700-2¼)			NA																										
LNAV MDA	2360-1	612 (700-1)	2360-1¾ 612 (700-1¾)	NA																										
<input checked="" type="checkbox"/> CIRCLING	2360-1 612 (700-1)	2520-1 772 (800-1)	2520-2¼ 772 (800-2¼)	NA																										

SC-1, 26 DEC 2024 to 23 JAN 2025

SC-1, 26 DEC 2024 to 23 JAN 2025