

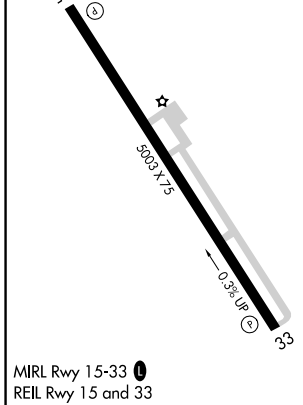
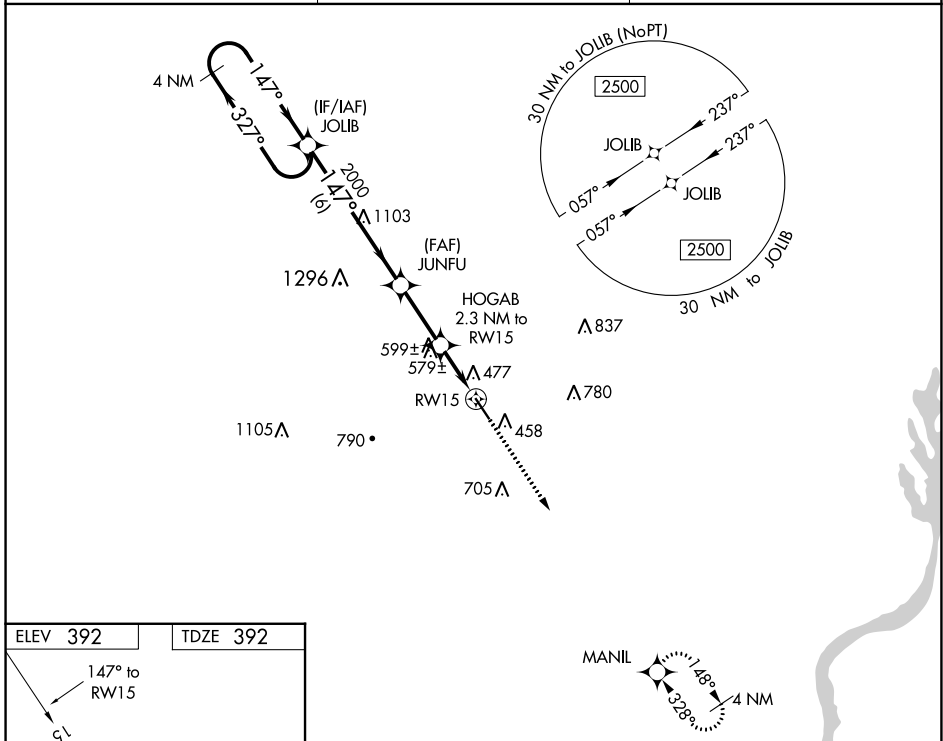
WAAS CH 49234 W15A	APP CRS 147°	Rwy Idg TDZE Apt Elev	5003 392 392
--	------------------------	-----------------------------	---

RNAV (GPS) RWY 15

BOONEVILLE/BALDWIN (8M1)

RNP APCH.	MISSED APPROACH: Climb to 2500 direct MANIL and hold.
<p>▼ Baro-VNAV NA. Use Corinth altimeter setting, when not received use Tupelo altimeter setting and increase all DA 4 feet, and all MDA 20 feet. Rwy 15 helicopter visibility reduction below 3/4 SM NA.</p> <p>▲ NA</p>	

CRX AWOS-3PT 118.675	MEMPHIS CENTER 135.9 273.55	UNICOM 122.8 (CTAF) 0
--------------------------------	---------------------------------------	---------------------------------



VGSI and RNAV glidepath not coincident (VGSI Angle 3.00/TCH 40).			
4 NM Holding Pattern JOLIB 2500 GP 3.00° TCH 55	JUNFU 2000 *1160	HOGAB 2.3 NM to RWY 15	MANIL 2500 *LNNAV only.
6 NM 2.6 NM 2.3 NM			
CATEGORY	A	B	C
LPV DA	777-1¼ 385 (400-1¼)		
LNNAV/VNAV DA	842-1½ 450 (500-1½)		
LNNAV MDA	880-1 488 (500-1)		880-1¾ 488 (500-1¾)

SC-4, 26 DEC 2024 to 23 JAN 2025

SC-4, 26 DEC 2024 to 23 JAN 2025