

|  |                        |   |             |
|--|------------------------|---|-------------|
| WAAS<br>CH <b>65923</b><br><b>W23A</b> | APP CRS<br><b>227°</b> | Rwy Idg<br>TDZE <b>1218</b><br>Apt Elev <b>1219</b> | <b>5003</b> |
|--|------------------------|---|-------------|

# RNAV (GPS) RWY 23

CHEROKEE COUNTY RGNL (CNI)

RNP APCH-GPS.

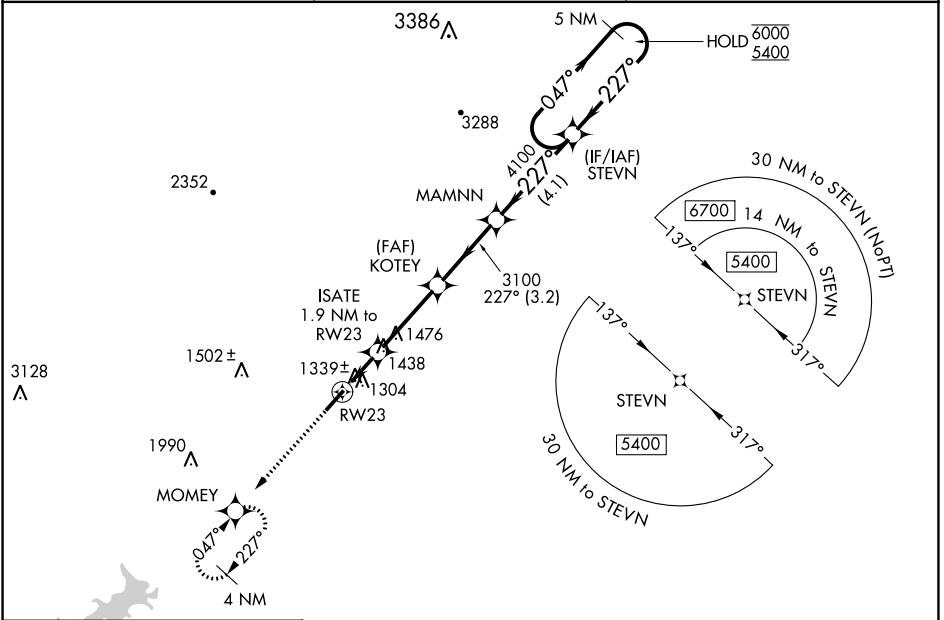
Rwy 23 helicopter visibility reduction below 1 SM NA. Straight-in Rwy 23 NA at night, Circling Rwy 23 NA at night.

MISSED APPROACH: Climb to 4000 direct MOMEY and hold, continue climb-in-hold to 4000.

AWOS-3PT  
**119,825**

ATLANTA APP CON  
**121.0 268.7**

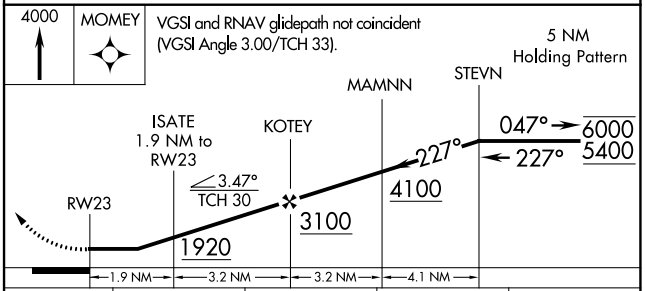
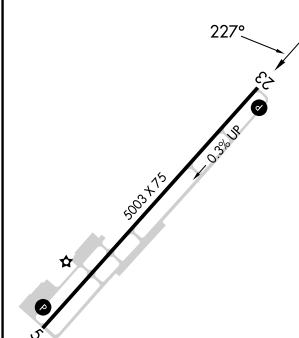
UNICOM  
**123.0 (CTAF)**



SE-4, 26 DEC 2024 to 23 JAN 2025

SE-4, 26 DEC 2024 to 23 JAN 2025

|           |           |
|-----------|-----------|
| ELEV 1219 | TDZE 1218 |
|-----------|-----------|



| CATEGORY          | A      | B           | C  | D  |
|-------------------|--------|-------------|--|----|
| LP MDA            | 1600-1 | 382 (400-1) | 1600-1 $\frac{1}{8}$<br>382 (400-1 $\frac{1}{8}$ ) | NA |
| LNAV MDA          | 1740-1 | 522 (600-1) | 1740-1 $\frac{1}{8}$<br>522 (600-1 $\frac{1}{8}$ ) | NA |
| <b>C</b> CIRCLING | 1740-1 | 521 (600-1) | 1820-1 $\frac{3}{4}$<br>601 (700-1 $\frac{3}{4}$ ) | NA |